

Introduction to Agrinavia MAP

(opdateret 31-10-2016)



Agrinavia, Stubbekøbingvej 41, DK-4840 Nørre Alslev
Tel.: +45 70 20 33 11 - Email: mail@agrinavia.com

AGRINAVIA

June 2016

Indeks

Generally.....	3
Create new customer in Agrinavia Field Map (Local Database Only)	3
The Job list.....	4
Draw area.....	6
Mark the area with a common border.	7
Enter field codes.....	9
Enter the field code for an area.	9
Area Colors.....	11
Right area colors.	11
Turn display of colors off and on.	13
Text display.	14
Viewing standard texts.	14
Move text.	16
View and move the text line.....	16
Rotate text.	18
Updating the land in the field plan in Næsgaard Mark.....	18
Calculate areas from the field map.....	19
Splitting up a field in two or more.....	20
Splitting a Field map with a simple line.....	20
Calculate the surface area of the headland all the way around a certain field.....	22
Calculate the area of the headland to a field.	25
Dividing an area with a remise.....	28
Automatic location of the division line from the desired area.	30
Merging two fields into one	33
Use of web service in Agrinavia Map	34
Create WMS or WFS.....	35
To create WMS map	35
To create WFS map.....	38
Print Map.....	41
Managing data (local installations only).....	42
Back up data to the server (Local installations only).....	42
Back up data from the server to the local hard drive (local database only)	44
Export jobs to a partial backup (Local installation only)	46
Get jobs from a partial backup (Local installation Only)	47

Generally

Generally

The first section of this guide shows you how to create a customer and identify orthophoto or google.maps for the customer area.

Note Online customers don't need to create anything as all data will be stored along with Agrinavia Management data.

The next section shows how you indicate and edit areas. In addition, how you put texts on the map and change colors and prints.

Last reviewed it, how to store data on the server and then download them again when you return to work with the customer.

Create new customer in Agrinavia Field Map (Local Database Only)

Choose Select Farm.




Thus, the following dialogue, which shows an overview of Farms available.

Select the icon Create to create a new database / farm.

There are several ways to organize data in Agrinavia Field Map, but we encourage that each customer has its own database.

Select farm



Database	Farm	Firm	First name	Last name	Farm
70203456	70203311		John	Farmer	
Advicer-Setu	Advicer-Setu	Advicer-Setup			
datalogisk ku	Datalogisk S		Kunder Sverige		
Demo	Demo	DataLogisk			
Standard	70203311		John	Farmer	

Select which field program you want to retrieve data from. This is done in the drop-down menu in the Download field data.

Using binocular icon you can then designate the farm in field program.

Create

Load fielddata from: Agrinavia MANAGEMENT

Farm no. Database

Firm

Name Phone 1

Last name Phone 2

Farm name Fax

Road Mobilephone

Place name Member no.

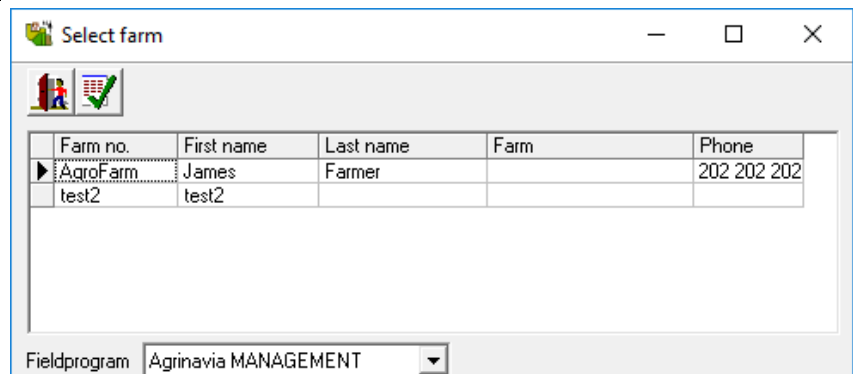
Postal

City

OK Cancel

In this dialog, showing achievements in field program, you appoint the farm that you want to draw a map.

Click Approve / select the icon to select the farm.



The 'Select farm' dialog box shows a table with the following data:

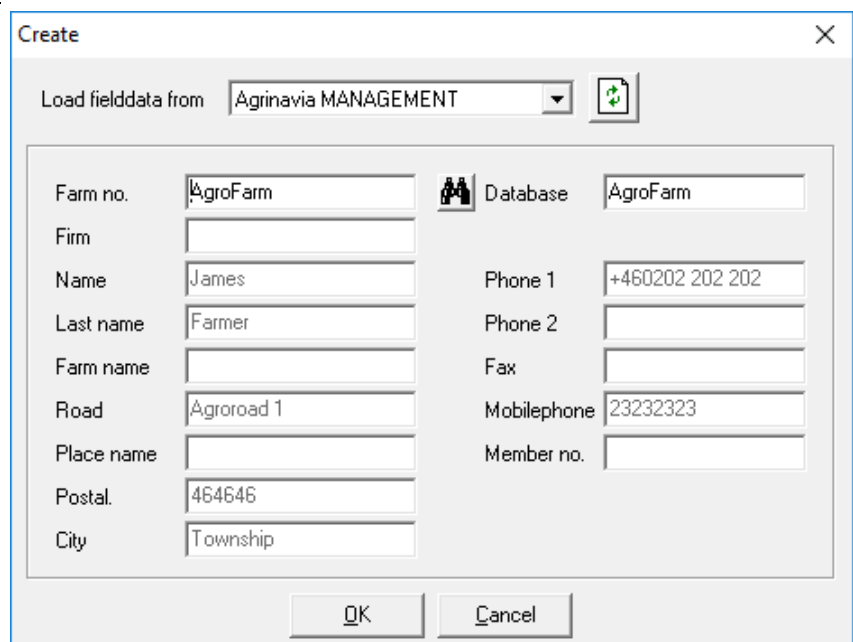
Farm no.	First name	Last name	Farm	Phone
AgroFarm	James	Farmer		202 202 202
test2	test2			

At the bottom, the 'Fieldprogram' dropdown is set to 'Agrinavia MANAGEMENT'.

Name and address information is now transferred to the AgrinaUsing Field Map. Approve the establishment with Ok.

Important: It will ALWAYS be a good idea to database name and bedriftsnr. are the same.

Database name is the file name as your map data stored in the hard disk. Bedriftsnr. is the number that field data is stored in your field program.



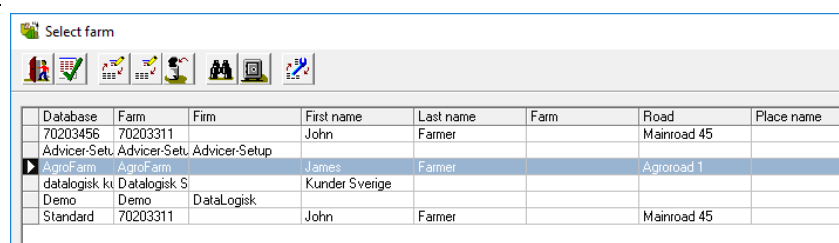
The 'Create' dialog box shows the following fields:

- Load fielddata from: Agrinavia MANAGEMENT
- Farm no.: AgroFarm
- Firm: (empty)
- Name: James
- Last name: Farmer
- Farm name: (empty)
- Road: Agroroad 1
- Place name: (empty)
- Postal: 464646
- City: Township
- Database: AgroFarm
- Phone 1: +460202 202 202
- Phone 2: (empty)
- Fax: (empty)
- Mobilephone: 23232323
- Member no.: (empty)

Buttons: OK, Cancel

The program will now set up a database for the client on your hard drive.

To work with the customer database, select the line and then leave the dialog with Accept / select the icon.



The 'Select farm' dialog box shows a table with the following data:

Database	Farm	Firm	First name	Last name	Farm	Road	Place name
70203456	70203311		John	Farmer		Mainroad 45	
Advicer-Setu	Advicer-Setu	Advicer-Setup					
AgroFarm	AgroFarm		James	Farmer		Agroroad 1	
datalogisk k	Datalogisk S		Kunder Sverige				
Demo	Demo	DataLogisk					
Standard	70203311		John	Farmer		Mainroad 45	

The Job list

Now select the Job list to get an overview of available jobs.



Select the icon Create. To create a new job



Select the type of Field Map and click Ok.

Farm shows the name of the connected farm

Enter the crop year that you want to draw cards.

As Jobcode you may write any text describing the job like *field map* (only used for filtration later).

In the Description field you can add more comments to the job.

Click OK to create the field map with the specified information.

With local database you have additional option to enter the customer's name, farm name, or possibly just a 1 number on top for filtration and option **active job** must be checked, if the land subsequently could be transferred to Agrinavia Management.

Now appears the generated field maps as a line in the Job overview.

Select the job by pointing to the line and click the icon Accept / Select.

This will load the job on screen.

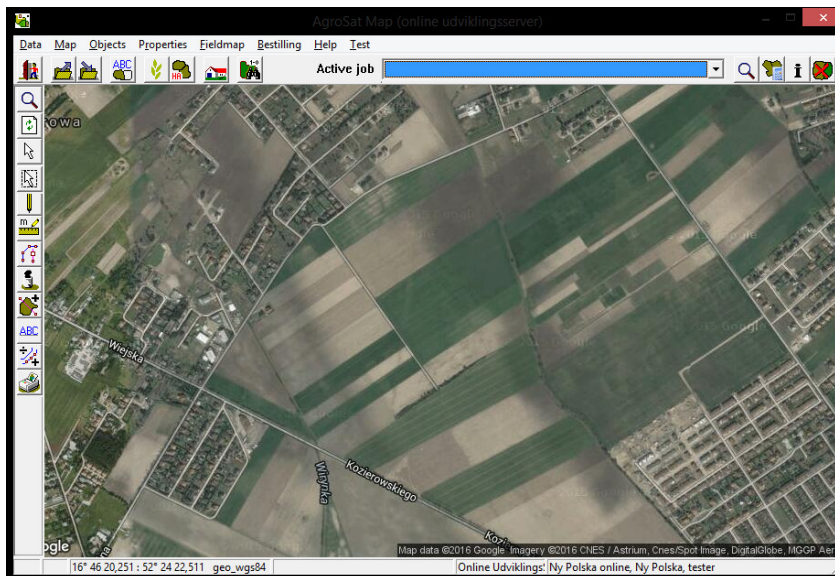
Online customers will have to check the option **Active Field Map**, to select Field Map in selected year, to use for Agrinavia Management.

Farm	Job code	Job description	Crop year	Active field map	Type	Last edited by	Last edited	Created by	Created
Ny Polska online	area fieldmap		2014	<input checked="" type="checkbox"/>	Fieldmap	Karsten Folmer	19-05-2016 11:05	Karsten Folmer	17-05-2016 14:38
Ny Polska online	area fieldmap		2016	<input checked="" type="checkbox"/>	Fieldmap	Karsten Folmer	17-05-2016 13:08	Karsten Folmer	17-05-2016 11:44

Draw area.

Zoom possible. further into the area you want to plot.

How close you need to zoom in to draw accurately, you get experience with gradually you learn the program and aerial know.



Select the Draw.

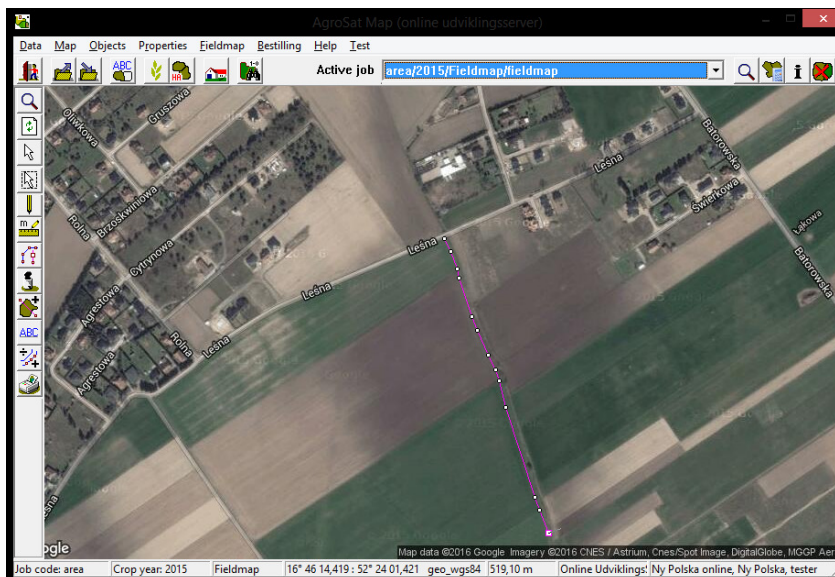


Then select the function Draw.



Now mark the field by clicking with the mouse around the field. For each time you want to devote an item is clicked with the mouse.

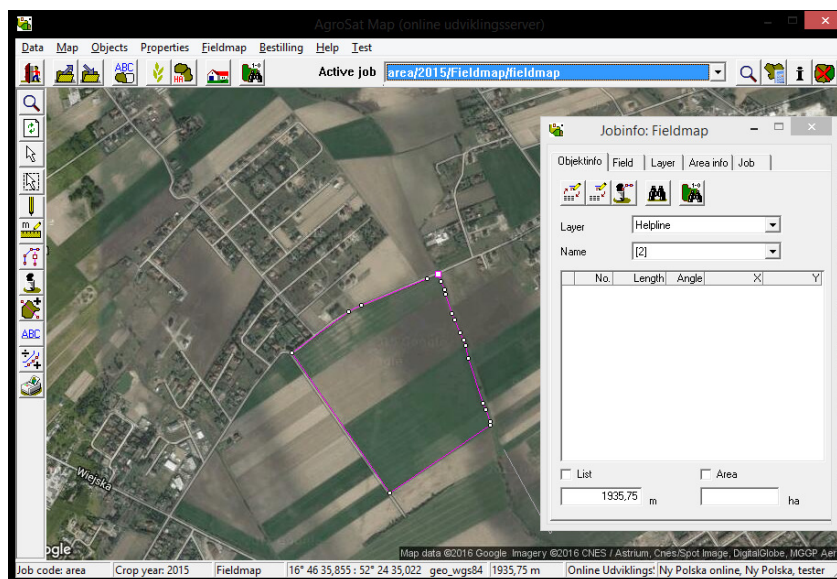
Remember that you can zoom in with the plus key and out with the minus key. Moreover, you can move the map with the arrow keys as you draw.



Enrollment completed by connecting the start and end point of the line. This can be done in the following ways:

By holding down the Ctrl key while clicking the point with the left mouse button. Then disconnect the drawing with click on the right mouse button.

Alternatively, you can get the program to connect the dots themselves by opening dialogue JobInfo and select the tab Object Info. Here ticked so the point area in which the program connects the start and end points automatically.



important

During the plotting of the area, it is important that you do not make loops on the line. This means that the line does not cross himself. Loops on the line may result in errors in the area calculation like the following can cause problems in different areas sharing features.

When you draw do not allocate more points than necessary. Avoid double-clicking with the mouse. A double click allocates just 2 points !!

Do you get the sign wrong can you delete the line and start over again. You can also delete a single item or move it. See more in This guide other sections.

Mark the next area

You can continue to plot the next area again to select characters function.

If you need to plot an area that has common border to another area you've drawn, see the following in the next example.

Mark the area with a common border.

Generally

If two land borders right up to each other so as to divide the width of the areas is 0 meters. It is important to be taken out 100% on top of the same points.

If you do not, then you risk that the areas overlap, or that there are "air" between areas.

Both situations can give wrong area calculations of minor or major nature.

In addition, it subsequently causes problems when you want to use the feature to merge the two areas.

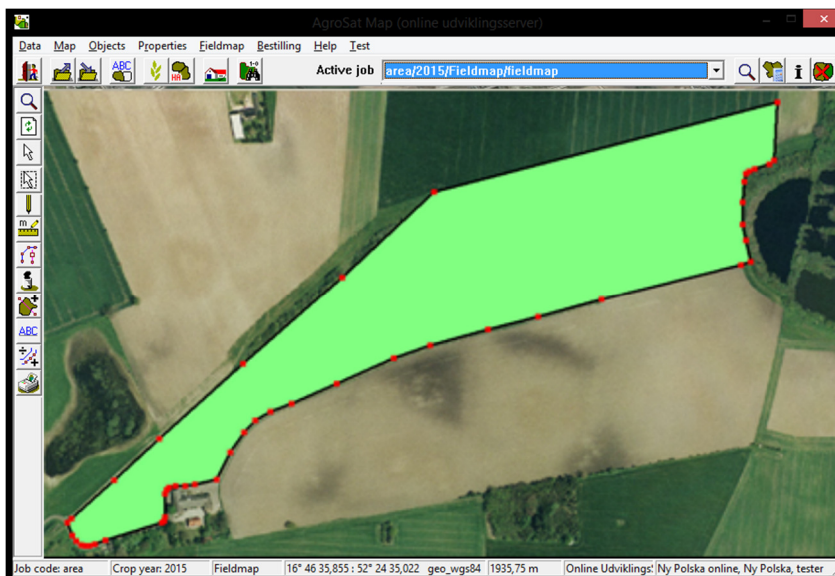
To avoid these problems, do the following:

Select the highlight points.



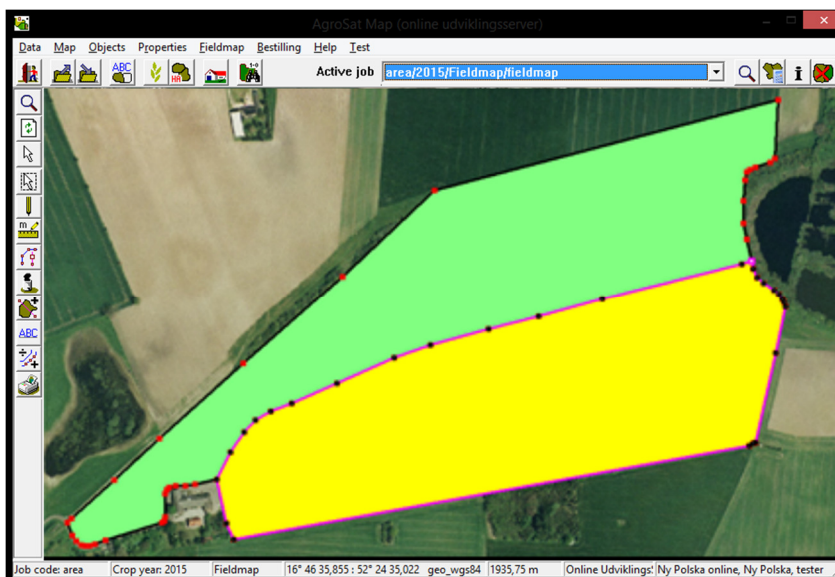
You can cancel the highlight of the points by again clicking the icon highlight points. (The icon acts as an on / off switch).

The program will now display the small square red borders around each point on the map.



In the example shown, there are 14 items which are common between the two areas.

When the neighboring area plotted, you can allocate the same points by holding down the Ctrl key while you click near a highlighted item. This program will automatically place the point created 100% on top of the existing point.



Enter field codes.

Generally

The following describes how to set the field codes in your land, so that your field maps are going to be related to your field plan in field program.

When field maps and field level are linked together allows you to transfer land from the field map to mark the plan. In addition, you can display information from field program on the field map.

Of course it is a prerequisite that you have drawn your area on the map.

Enter the field code for an area.

prerequisites

The map you want to work with, must be selected as the active job.

Select the JobInfo.



Now open JobInfo dialogue.

Select the tab Mark so it is in the front.

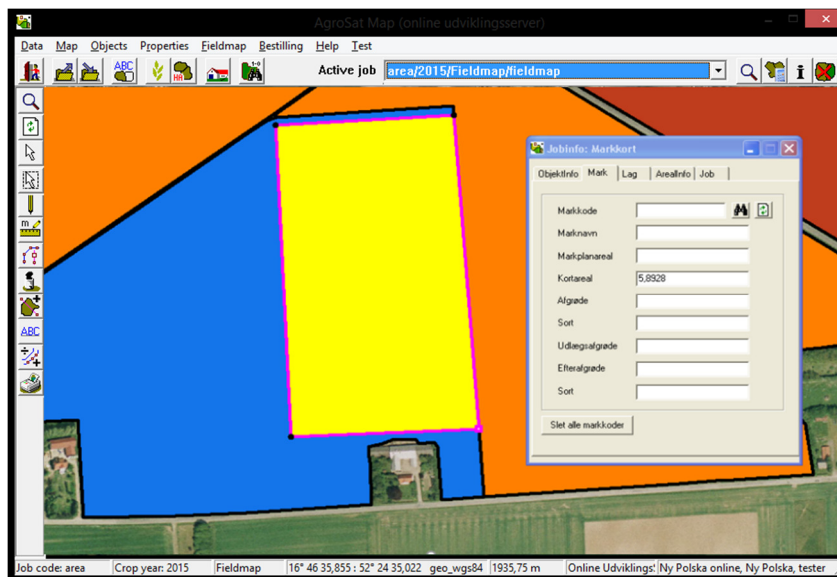
Choose Select object. (In the vertical toolbar).



Now click on the area you want to enter the field code.

This makes the active area. An active area turns yellow. At the same time line around the area active.

Information about the area will also be in jobinfo dialogue.



Click the Search function of the field level to select a field from the field plan.



Now the field plan.

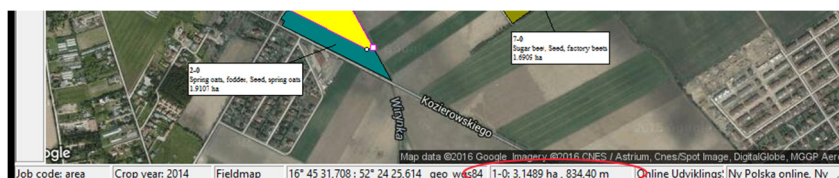
Select the field by double-clicking the field. You can also click once on the field and then click Authorize icon.

If field plan does not appear, it may be because you have not entered the correct holding code on the card.

Search					
Field code	Field name	EUblok nr.	Area	Crop	Variety
1-0			3,15	Potatoes, edible	Seed, potatoes
2-0			1,91	Spring oats, fodder	Seed, spring oats
3-0			4,88	Spring wheat, bread	Seed, spring whe
4-0			8,97	Spring barley, malt	Seed, spring barl
5-0			9,00	Winter wheat, fodder	
6-0			3,06	Winter wheat, fodder	
7-0			1,69	Sugar beet	Seed, factory be
7-1			0,70	Spring barley, malt	Seed, spring barl

Mark code will now be transferred to field code field. Layer name is automatically corrected to the current crop in the field plan.

In the future when you click on the area, you can see the field code and the area at the bottom of the screen.

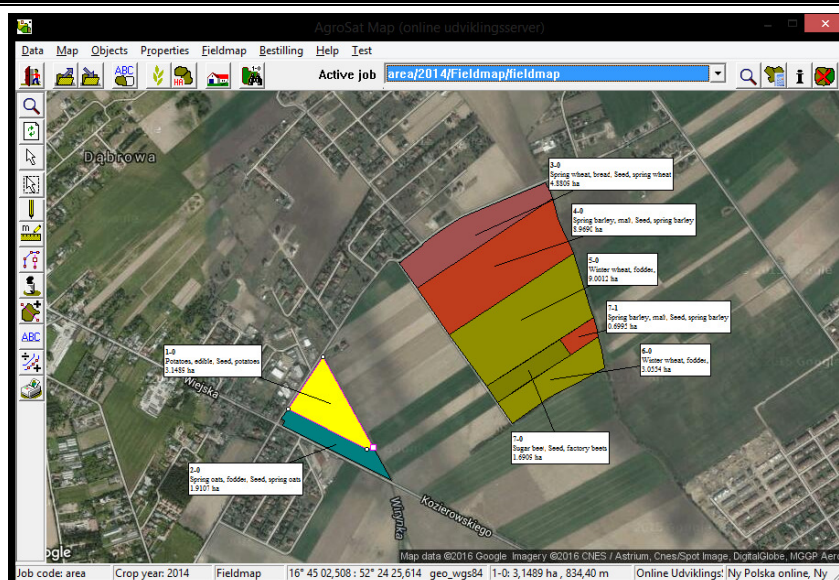


Area Colors.

If you are not satisfied with the colors, the program automatically assigns the individual areas, you can correct them via the layer list in the Job Info dialog.

You can also generally switch the display of colors from and via the Quick Setup.

You can also read more about the Job Info dialog in the Users section Drawing Tools.



Right area colors.

prerequisites

The map you want to work with, must be selected as the active job.

Select the JobInfo.



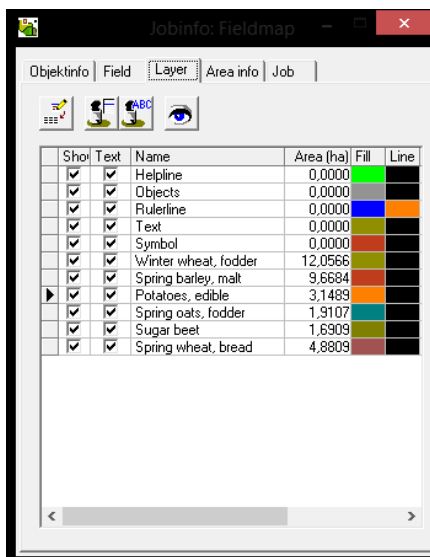
Now open JobInfo dialogue.

Select the tab Layer so it is in the front.

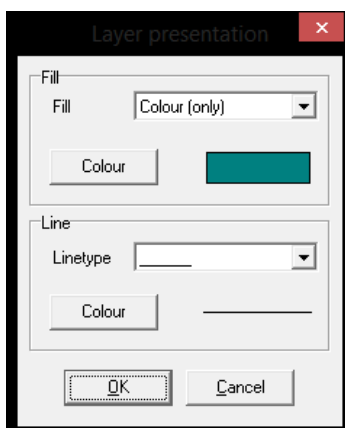
Layer list will contain a number of predefined layers. In addition, it will contain the crop names. In addition, there may be layers that you have created.

The colors for fill and line can now be corrected by clicking on the respective fields.

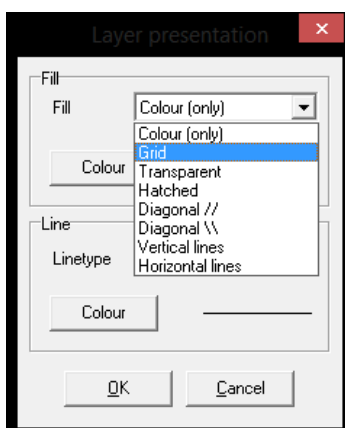
Click example. the color out of Spring barley malt.



Now, the following dialogue, where you change the color and appearance of both fillings as lines.



In the drop-down list of colors, you can choose whether only be filled with color. You can also choose to fill with both the pattern color. For line, you can specify a line type and color.

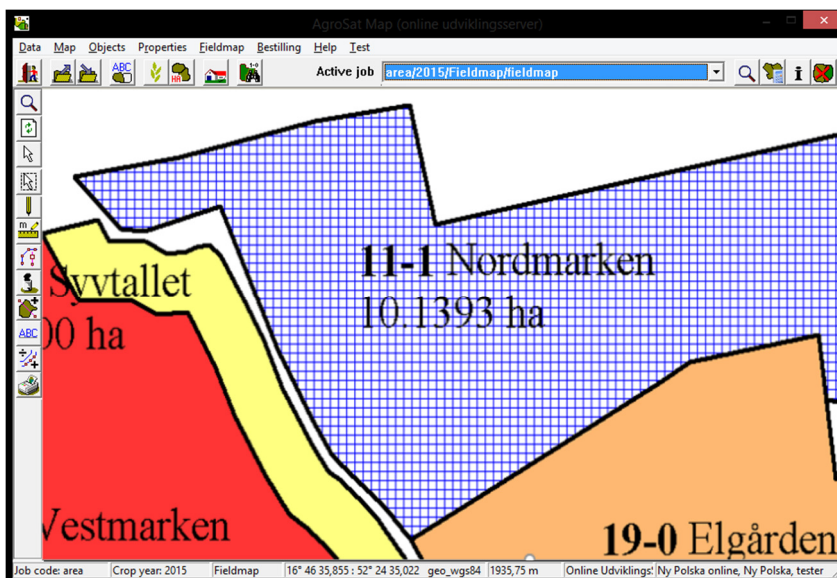


When you select the button color, Appears a color palette where you can choose the color you want on the layer.

Approve the color choice with Ok.



A presentation with grid and fill color, for example. look like this.



Turn display of colors off and on.

Generally

In some situations, it may be nice to turn off the color completely. You can do this as follows.

Select the JobInfo.

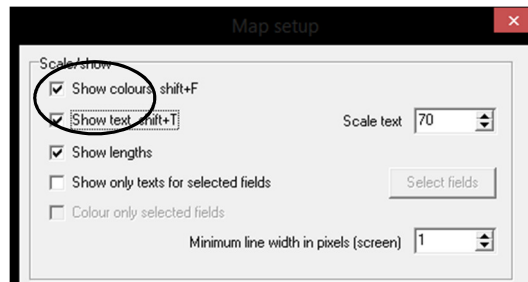


If you remove the cross in the Show Colors, the program will not show the fill color for the card.

Colors can also be turned off / on with Shift + F keys.

When colors are turned off / on in these ways, it applies to the whole map.

In the layer list, it is possible to turn colors from / to the individual layers.



Text display.

The following describes how to set the texts on the card.

To display the texts from the field program, you must have field codes in the individual areas.

Viewing standard texts.

prerequisites

The map you want to work with, must be selected as the active job.

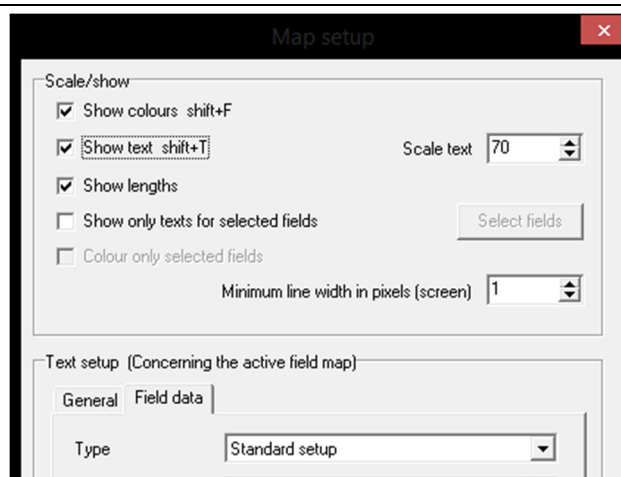
Select the Map Setup.



By ticking the Show text is text displayed on the screen. In the Scale text you can specify a factor for the text size.

By ticking the Show length, the program will display lengths for measuring lines.

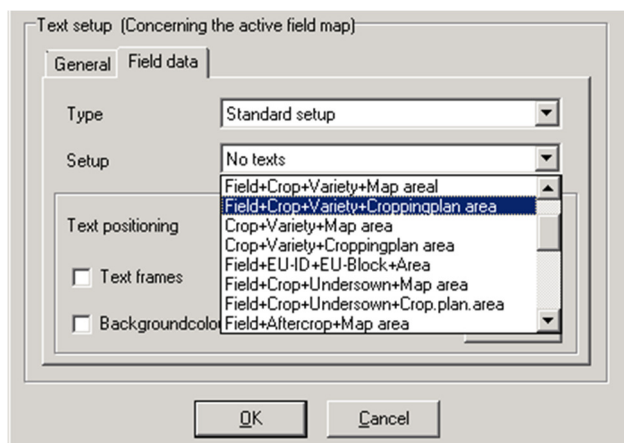
By ticking Show only texts of selected fields, you can use the Select button fields, select the fields you want to display texts.



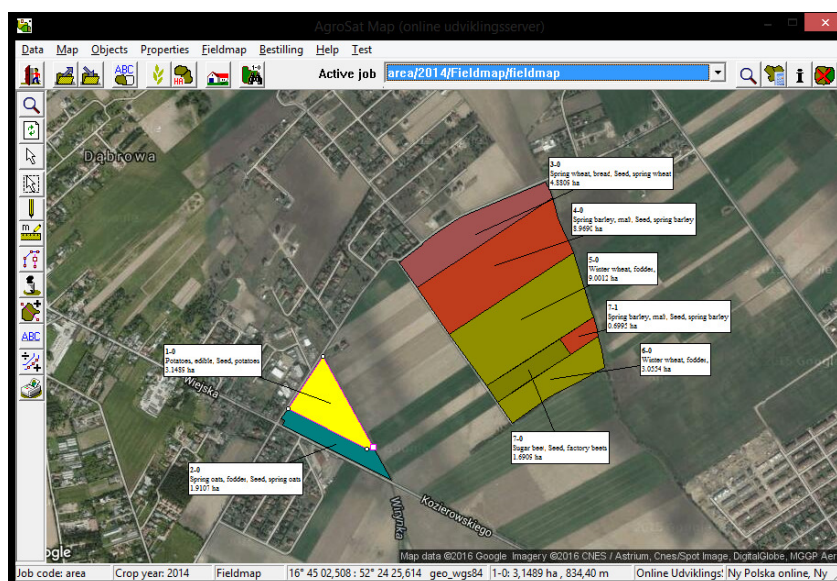
Via the tabs General and Field data, you can choose what text setup you want to use.

Under the Mark Data can in the Setup box choose to display data from field program on the field map.

For example, choose the setup Mark + Crop + Black + Mark Map area and click OK.



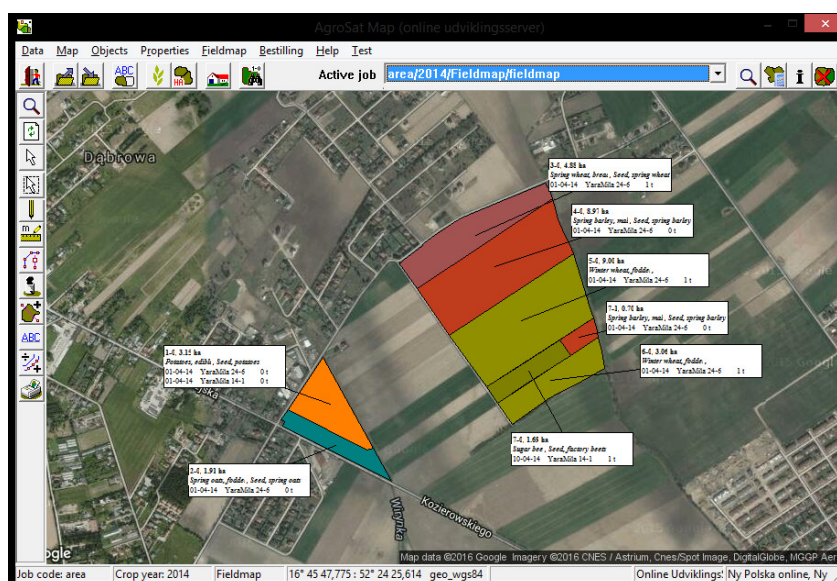
The program now displays field code, field name, crop, and the area calculated from the field map.



Try to choose the setup Mineral fertilizers instead.

Now the program will display commercial operations of your fertilizer plan in field program.

For each award is displayed in addition to information about the field date, fertilizer type and amount per. hectare.



Move text.

prerequisites

The map you want to work with, must be selected as the active job.

Select the Texts.



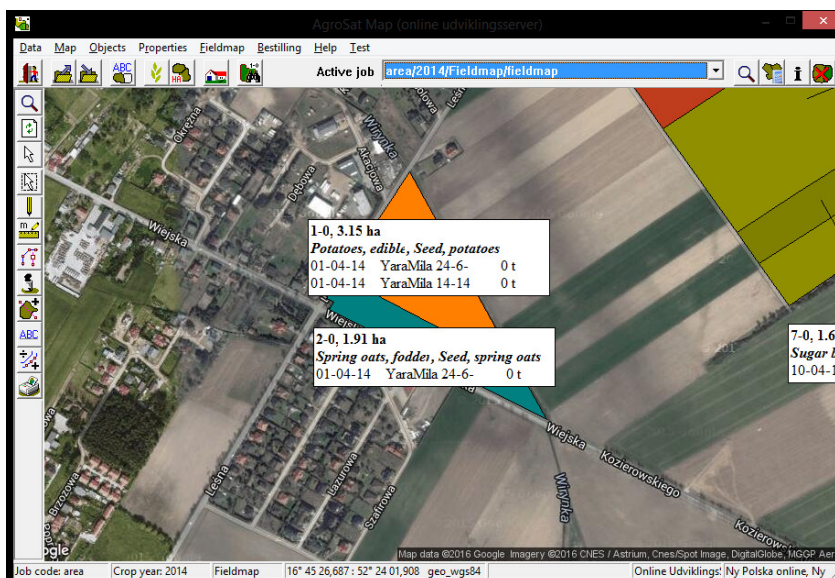
Then select the function Move text.



The text of arable 2-0 will now be moved up in the field.

Click on the text and hold the mouse button while the text is dragged to the desired position.

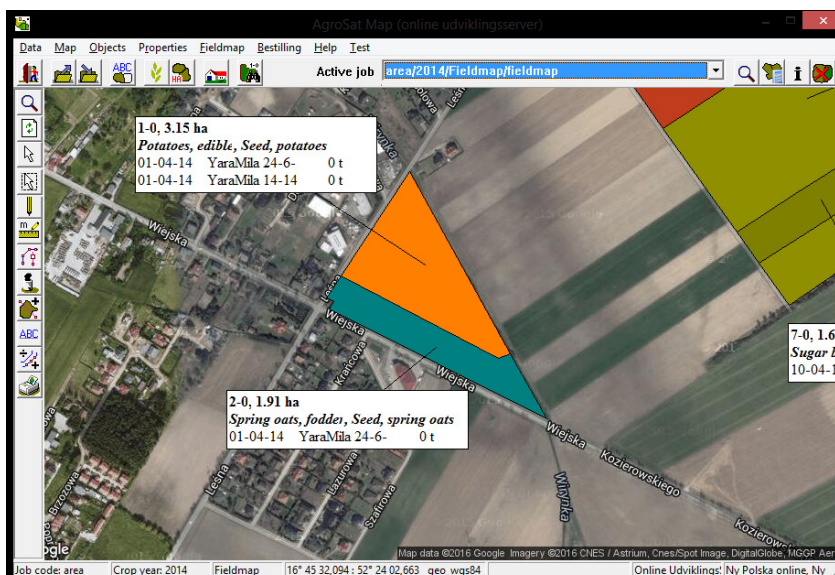
When the mouse button is released the attached text to the desired position.



The text has now been moved to the desired position.

If the text is not positioned correctly, you can of course move the text again.

The program automatically remembers the location of each text for the field map.



View and move the text line.

Generally

For each text you can display a line that goes from the text of the object (area) as the text describes. It is not in all situations that the program can calculate a logical location of

the line of text relative to the object. Therefore, there is a function in the program, where you can move the text line. Via the list of layers it is also possible to display / hide the text lines for each layer.

prerequisites

The map you want to work with, must be selected as the active job.

Select the JobInfo.



If you want to display text lines for an object, there must be ticked column Txt lin out of the layer that the object is located.



The text line for field 11-1 is pointing in the wrong area. In this case, because the field surrounding a second field. The process of moving text is as follows.



Select the Texts.

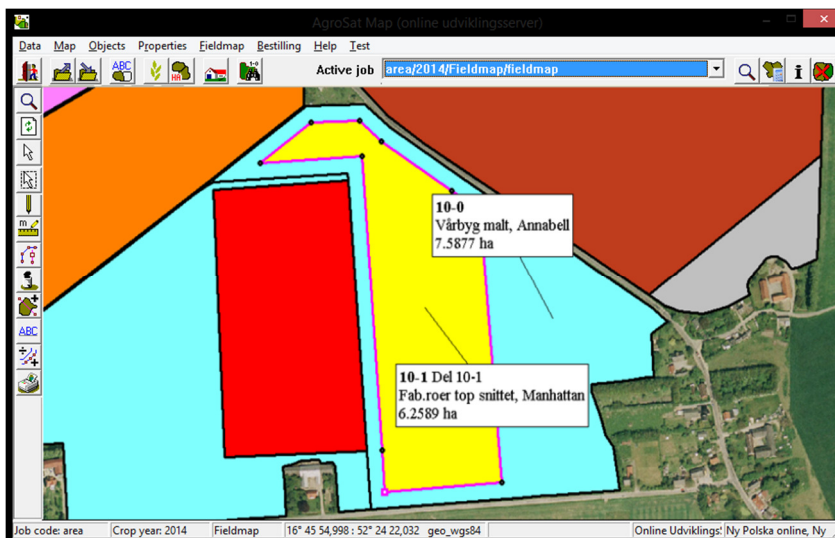


Then select the function Move the text line.



Click the mouse at the end of the text line. Hold down the mouse while the endpoint dragged to where you want it located. Then click again with the mouse.

The end point of the line of text is now located and the new location will be saved along with the field map.



Rotate text.

Rotate text

It is also possible to rotate the text on the map.

Select the Texts.

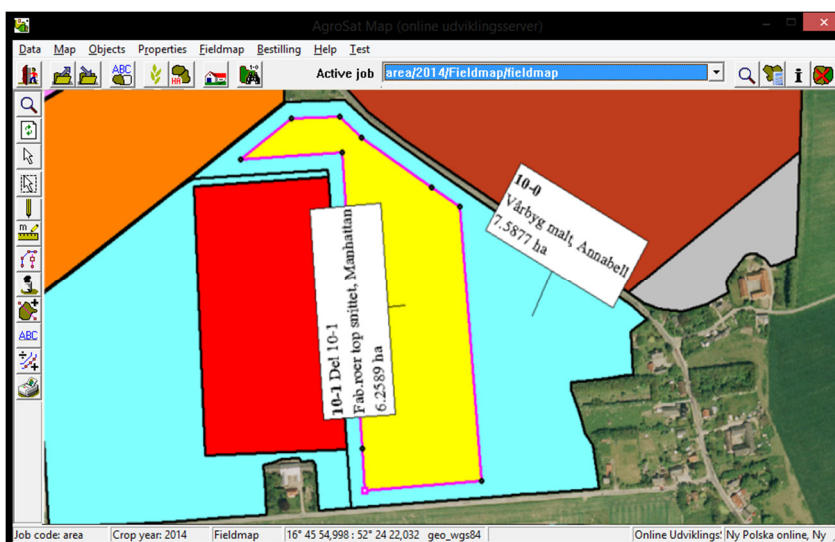


Then select the function Rotate text.



Click a text box with the mouse and hold the button while turning the text to the desired position.

If you right-click on the text, you can via menu that appears, also rotate a text 0, 90, 180 and 270 degrees. 0 degrees corresponds to putting the text horizontally.



Updating the land in the field plan in Næsgaard Mark.

Generally

The following describes how to update land in the field plan so that they are consistent with the land in which you have calculated on the map.

The description only applies if you use Næsgaard Mark.

If you use Bedriftsløsning, you may even enter areas in the field plan.

Assumptions.

The field maps (job) to be included in the calculation of arable land must be ticked in the Job is active.

At the same time holding the code be entered correctly on the map. Farm code changed under Select holding.

Note: Each field in the field plan may only be in an active job per. marketing year.

Farm	Job code	Job description	Crop year	active field map	Type	Last edited by	Last edited	Created by	Created
Ny Polska online		area fieldmap	2014	<input checked="" type="checkbox"/>	Fieldmap	Karsten Folmer	19-05-2016 11:05	Karsten Folmer	17-05-2016 14:38
Ny Polska online		area fieldmap	2015	<input checked="" type="checkbox"/>	Fieldmap	Karsten Folmer	17-05-2016 13:08	Karsten Folmer	17-05-2016 11:44

Calculate areas from the field map.

Select Calculate areas in Agrinavia map.



The dialog now displays that areas are transferred to the management module



The transferred area will appear in the column **Map data**

Field	Name	Field code	Area	Type	Last crop	Crop	Map data
							Net area
runiktest	uno	1-0	17.17	Main crop	Spring wheat	Spring oats	
runiktest	duo	2-0	2.12	Main crop	Potatoes, eds	Spring wheat	
runiktest	trio	3-0	3.53	Main crop	Spring oats, f	Potatoes, ed	
runiktest	quattro	4-0	5.64	Main crop	Sugar beet	Spring barley	
runiktest	cinque	5-0	1.39	Main crop	Sugar beet	Spring barley	
runiktest	six	6-0	12.93	Main crop	Spring barley	Winter wheat	
runiktest	zette	7-0	0.53	Main crop	Winter wheat	Winter wheat	
runiktest	octa	7-1	14.93	Main crop	Winter wheat	Sugar beet	

To update areas

The corresponding Fields in the field plan will now be updated with the net area, which is calculated on the field map. On the field leaves updated treated areas for planned records proportionately. Areas treated for actual treatments are not changed. These may possibly. adjusted manually.

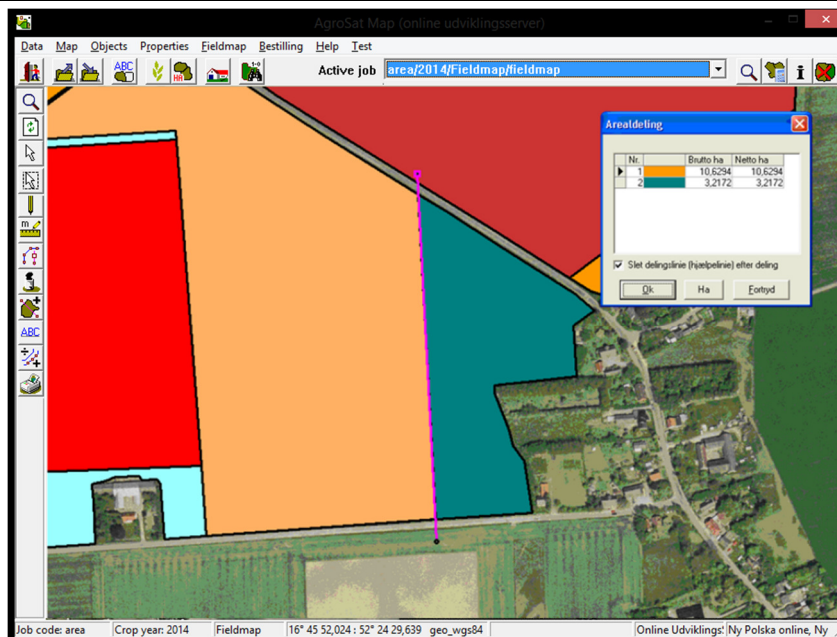
Select all fields and press **Transfer areas** to update.

Splitting up a field in two or more

Splitting a field map is done by drawing a dividing line over the area. Next, select the Split feature area.

The program will now calculate the new areas arising from the division. The result is displayed in the dialogue area Sharing. Via this dialog can accept or undo the division. One can also have the program automatically calculate how sharing the line must be to achieve a particular area.

By plotting the line of division, it is important that it crosses the area on both sides.



Generally surrounding area sharing

This example describes the general approach by sharing space.

Multi headland all around

This example shows how to calculate the area of a Multi headland all the way around a field.

Multi headland on a plot of land

This example shows how to calculate the area of a Multi headland of a portion of the field.

Share space with remise

This example shows how to calculate the area of a field with a remise.

Automatic calculation of the division line from the desired area

This example describes how to find the exact location of a shared line if you want a particular area.

Splitting a Field map with a simple line.

prerequisites

The map you want to work with, must be selected as the active job.

Zoom to area

Use the zoom function and zoom in on the area you want to share

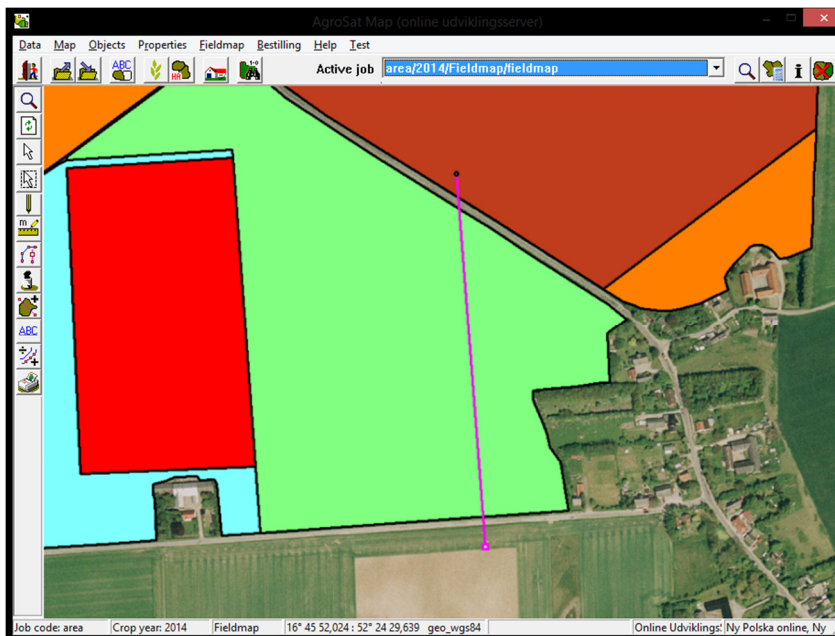
Select the Draw.



Then select the function Draw.



Draw the line that will share the land. It is important that the line goes beyond the area of the border at both ends. Otherwise the program cannot subsequently split the field. The line drawn by clicking the mouse every time you want to devote a point. You finish the drawing by clicking the right mouse button.



Select the area.



Then select the Share feature area.

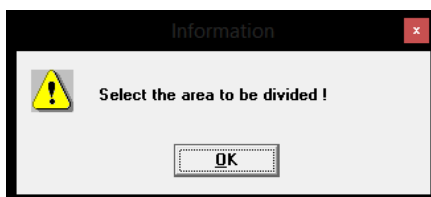


important

Before choosing the function, it is important that the line you wish to share the area with active. If not, select it via the Select object.

If you just drew the line will normally be active. An active line will usually be mauve. In addition, the line items must be highlighted.

Now the following message. Click OK and then select the area to be shared.

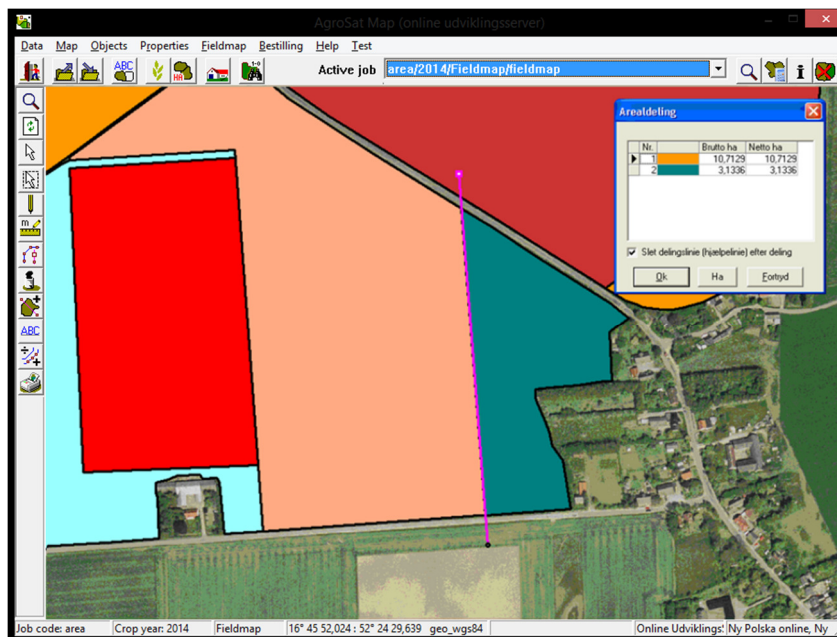


The program will now calculate the number of new sites, and the size of these. Normally, a division result in the two areas, but it may also be three or more.

Any inland areas that were already deducted, will still be deducted from the new areas.

If you click OK in Areal Sharing dialog, the program will automatically create the new areas (objects) and delete the original.

If you also tick the box; Clear division line in the division, the program will automatically delete the line that you originally subscribed to share the land.



Calculate the surface area of the headland all the way around a certain field.

prerequisites

The map you want to work with, must be selected as the active job.

Zoom to area

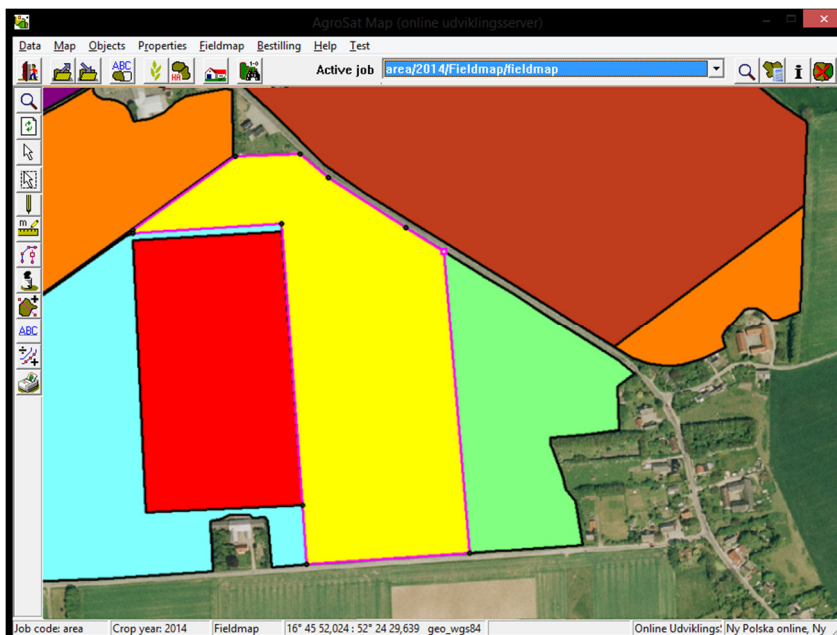
Use the zoom function and zoom in on the area you want to share.

Choose Select object.



Click on the land border or inside the area. Then the land border selected as the active object.

For the active object is each item highlighted. Similarly, the line light purple.



Select the Properties.

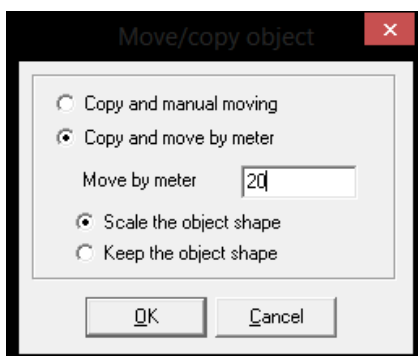


Then select the function Copy / Move object.



Tick the box Copy and move with the number of meters. Specify the number of meters that the object (boundary) to be moved.

Enter the object format to be scaled or maintained. (Normally, select Scale), and click OK.

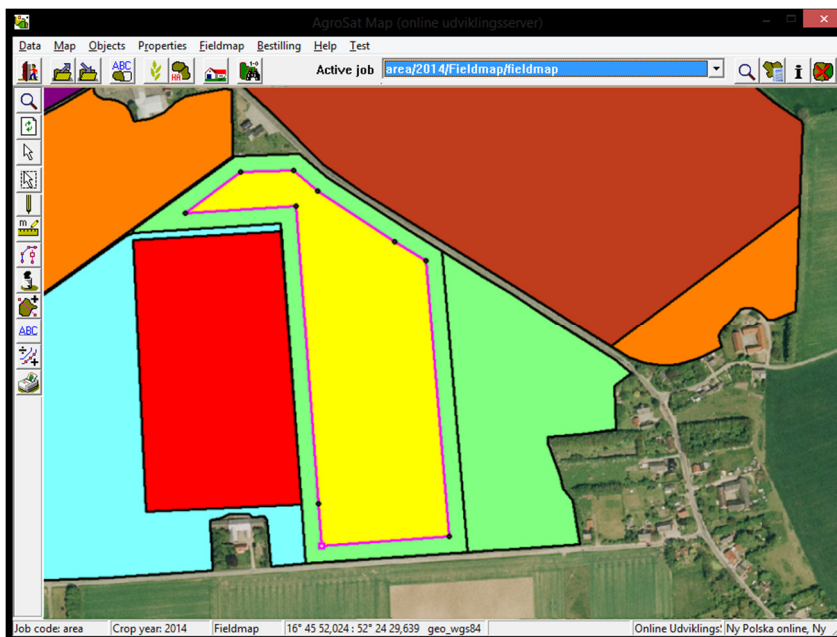


Now click in the direction in which the object to be copied.

If the object to be copied into the area, click inside the area.

If the object to be copied outside the area, click outside the area.

There will be automatically created a new object of type Help Line, when you click.



Select the area.



Then select the Share feature area.

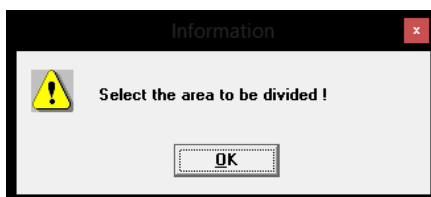


important

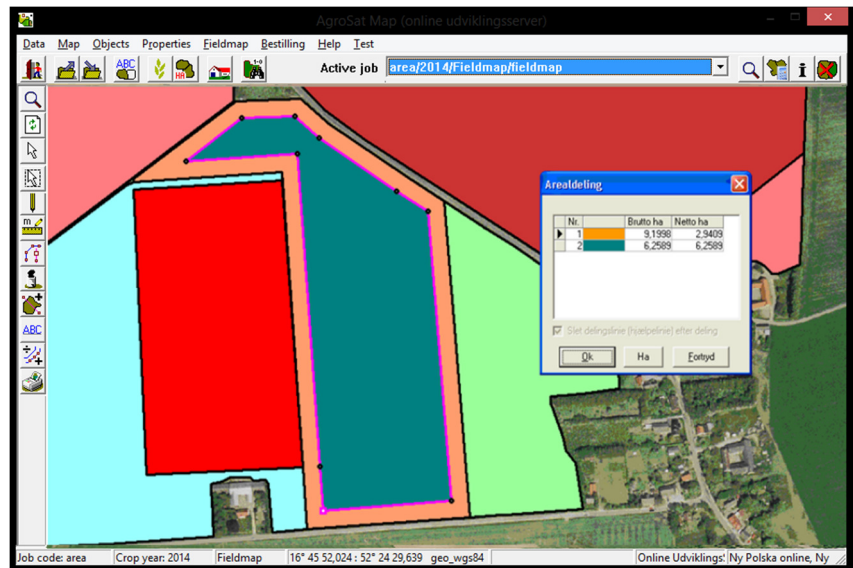
Before choosing the function, it is important that the line you wish to share the area with active. If not, select it via the Select object.

If you have just subscribed / offset line will normally be active. An active line will usually be mauve. In addition, the line items must be highlighted.

Now the following message. Click OK and then select the area to be shared.



The program will now calculate the number of new sites, and the size of these. Internal areas that were previously deducted, will still be deducted. (Netto areas shown in Net ha column). If you click OK in Areal Sharing dialog, the program will automatically create the new areas (objects) and delete the original.



Calculate the area of the headland to a field.

prerequisites

The map you want to work with, must be selected as the active job.

Zoom to area

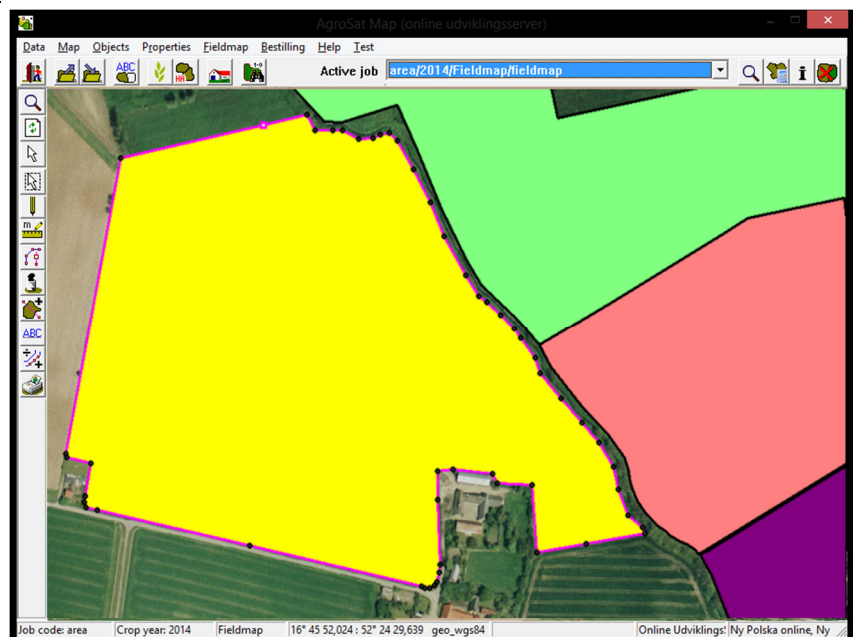
Use the zoom function and zoom in on the area you want to share

Choose Select object.



Make the area you want to work actively by clicking on the land border or inside the area.

For the active object is each item highlighted. Similarly, the line light purple.



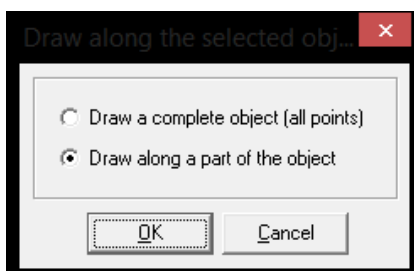
Select the Draw.



Then select the function Signs along the selected object.



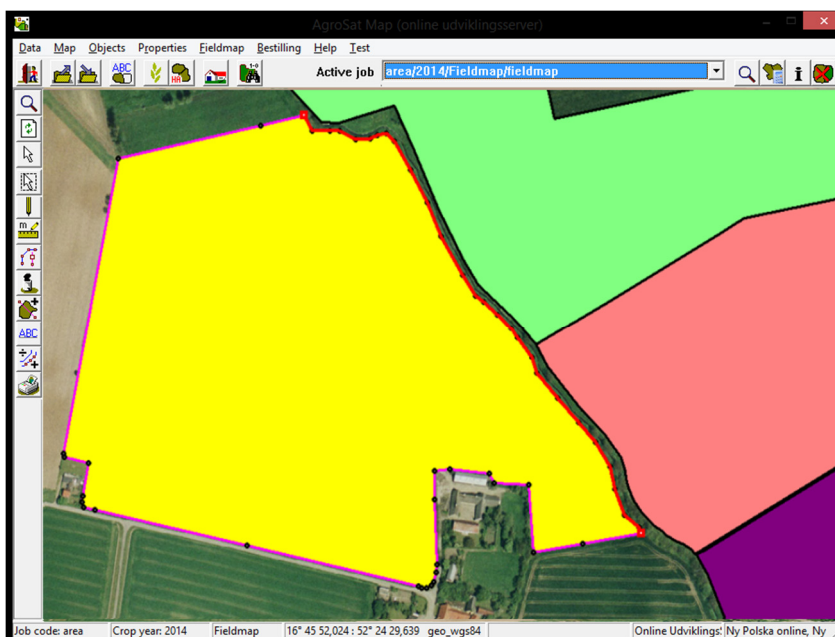
Tick the item signs along part of the boundary.
Click OK.



You'll draw the line which will subsequently be shifted into the area. You do not need to click in every point on the line. You only have to devote a start point and an end point. If you set aside the starting point wrong, you should select the Draw along the selected object anew.

The end point can, however, be changed by clicking back and forth on the line.

Drawing a line terminated by clicking the right mouse button.



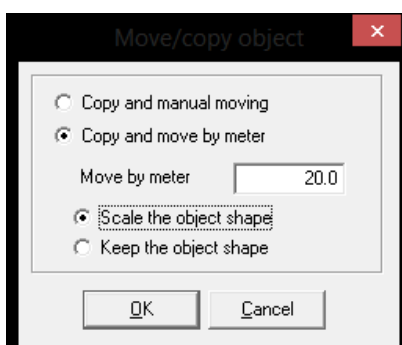
Select the Properties.



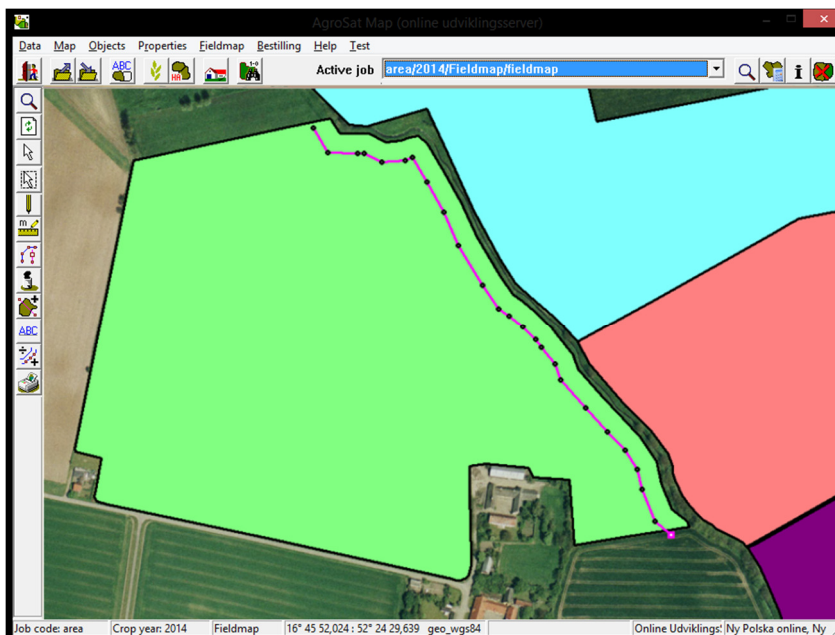
Then select the function Copy / Move object.



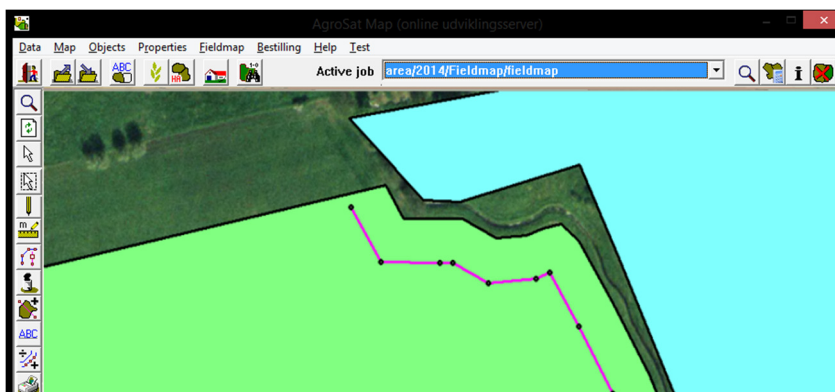
Tick the box Copy and move with the number of meters.
Specify the number of meters that the object (boundary) to be moved.
Enter the object format to be scaled or maintained.
(Normally, select Scale), and click OK.



Now click in the direction in which the object to be copied.
It must be copied into the area, click inside the area.
There will be automatically created a new object of type Help Line, when you click.



Check that both ends of the line beyond the edge area. If they do not, you cannot make space calculation.
Please possibly into the line ends to check it.
In this example, one of the ends does not go beyond the edge area. Therefore, we must first extend it.



Select the Draw.



Then select the function Draw.



Click the last point on the line to resume drawing of the line.
Then draw the line beyond the edge area by allocating one or more points.
Finish the drawing with click on the right mouse button.
Zoom back with Zoom to previous to view the entire field.



Select the area.



Then select the Share feature area.

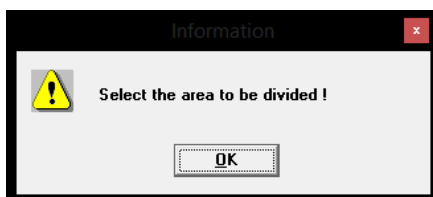


important

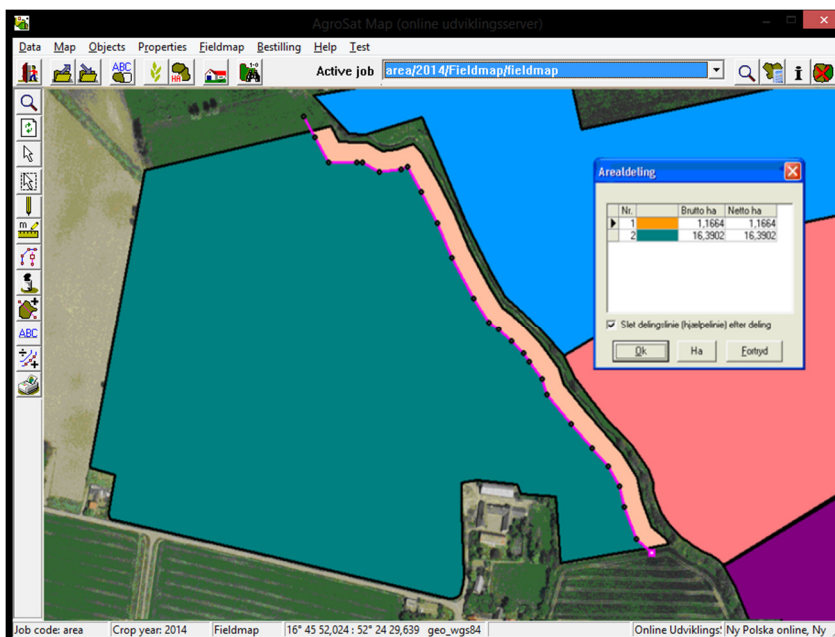
Before you select the Share area, it is important that the line you wish to share the area with active. If not, select it via the Select object.

If you have just subscribed / offset line will normally be active. An active line will usually be mauve. In addition, the line items must be highlighted.

Now the following message. Click OK and then select the area to be shared.



The program will now calculate the number of new sites, and the size of these. Internal areas that were previously deducted, will still be deducted. (Netto areas shown in Net ha column). If you click OK in Areal Sharing dialog, the program will automatically create the new areas (objects) and delete the original.



Dividing an area with a remise.

Generally

If you draw a shed in a field and you want to land this should be deducted field area, divide the area with shed. This gives you field correct net area.

prerequisites

The map you want to work with, must be selected as the active job.

Zoom to area

Use the zoom function and zoom in on the area you want to share

Select the Draw.

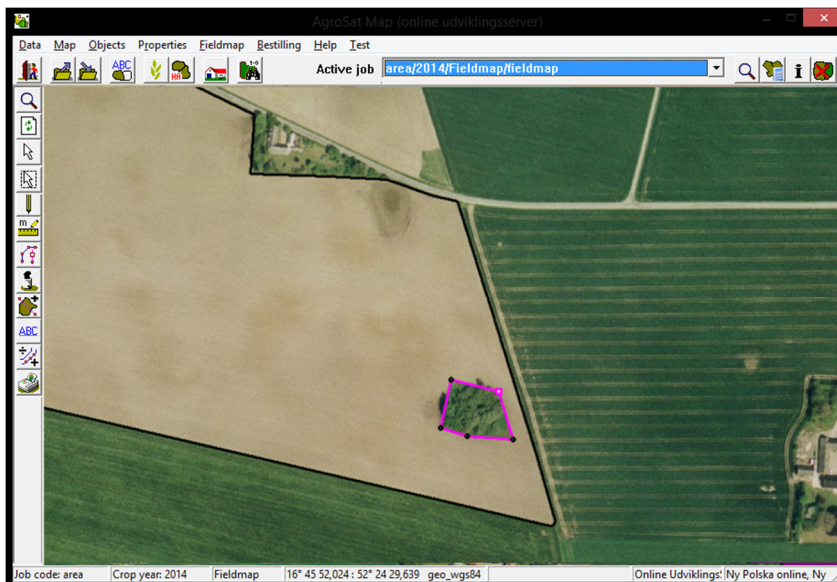


Then select the function Draw.



Draw shed by plotting points with the mouse. Start and end points connected by holding down the Ctrl key while clicking the left mouse button. The drawing is terminated by clicking the right mouse button.

Possibly it may be beneficial to place using lines parallel to the field boundaries and shift them so that the depot has the right distance and angle to the field boundary.



Select the area.



Then select the Share feature area.

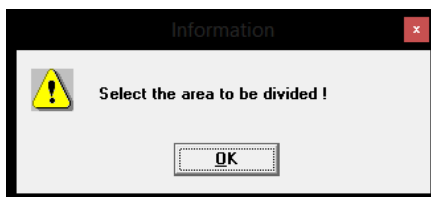


important

Before choosing the function, it is important that the line you wish to share the area with active. If not, select it via the Select object.

If you have just subscribed / offset line will normally be active. An active line will usually be mauve. In addition, the line items must be highlighted.

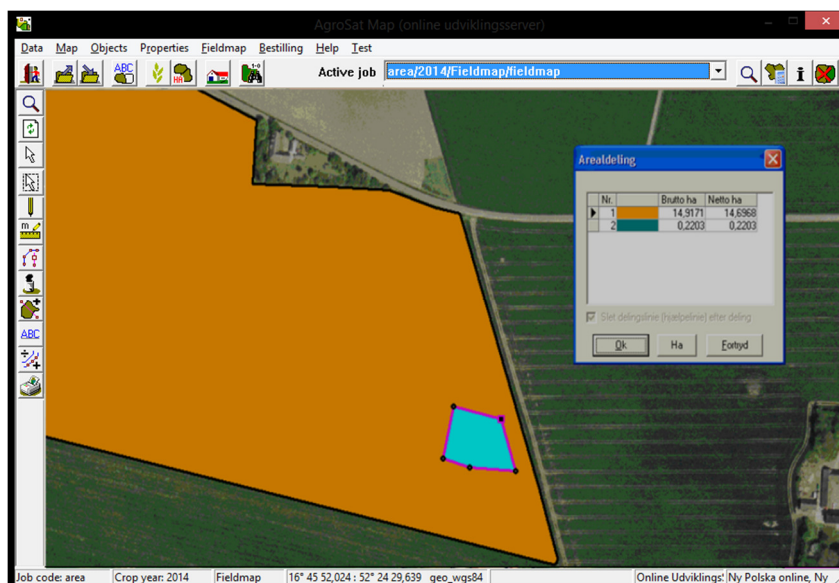
Now the following message. Click OK and then select the area to be shared.



The program will now calculate the number of new sites, and the size of these.

Internal areas that were previously deducted, will still be deducted. (Netto areas shown in Net ha column).

If you click OK in Areal Sharing dialog, the program will automatically create the new areas (objects) and delete the original.



Automatic location of the division line from the desired area.

Generally

By land divisions you have the opportunity to enter an area, and the program automatically calculates the exact location of the division line.

The function can be used regardless of the type of land division to make and almost regardless of the division line appearance.

However, it is a prerequisite that there are only two areas in Areal Sharing dialog.

prerequisites

The map you want to work with, must be selected as the active job.

Zoom to area

Use the zoom function and zoom in on the area you want to share.

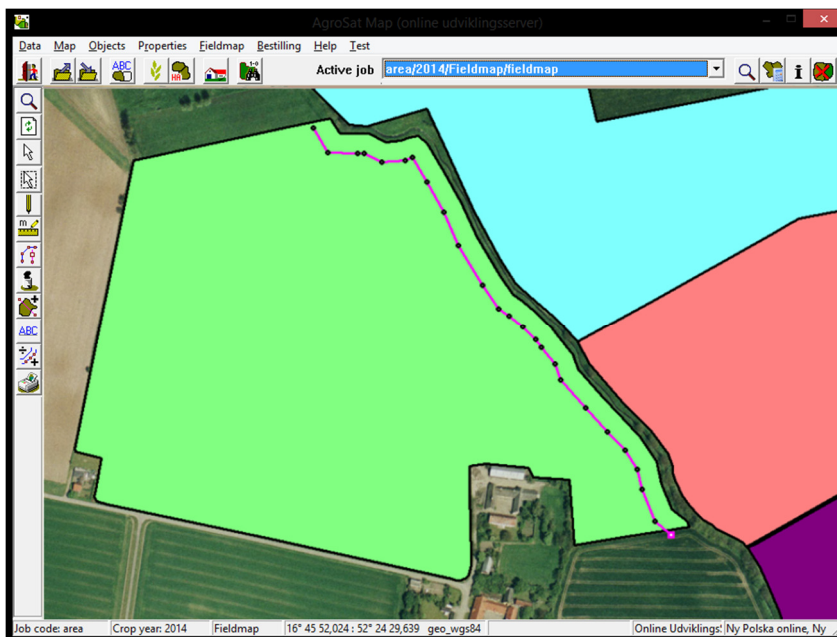
Select the Draw.



Then select the function Draw.



Draw a division line that goes beyond the area borders on both sides. Draw the example parallel to a boundary.



Select the area.



Then select the Share feature area.

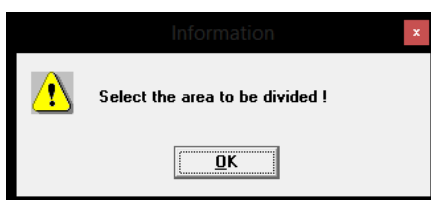


important

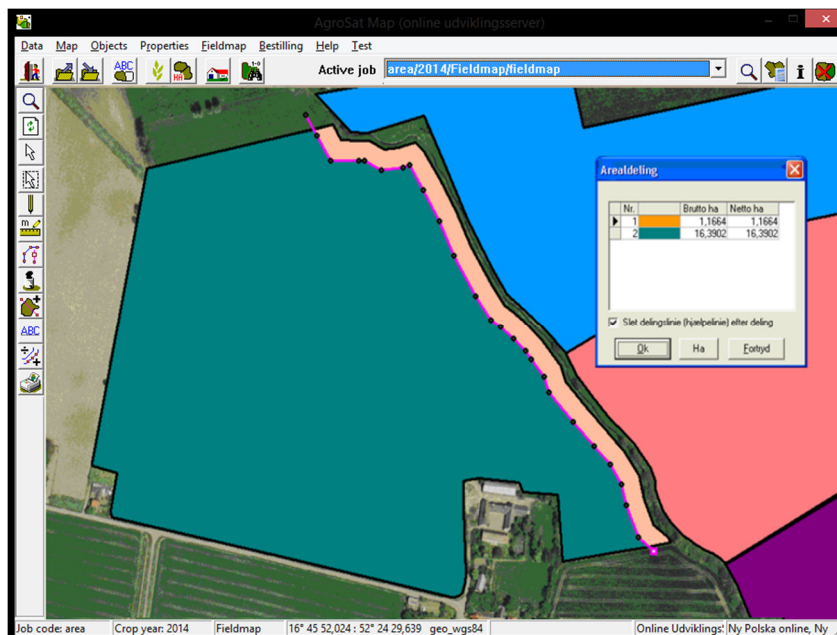
Before choosing the function, it is important that the line you wish to share the area with active. If not, select it via the Select object.

If you have just subscribed / offset line will normally be active. An active line will usually be mauve. In addition, the line items must be highlighted.

Now the following message. Click OK and then select the area to be shared.



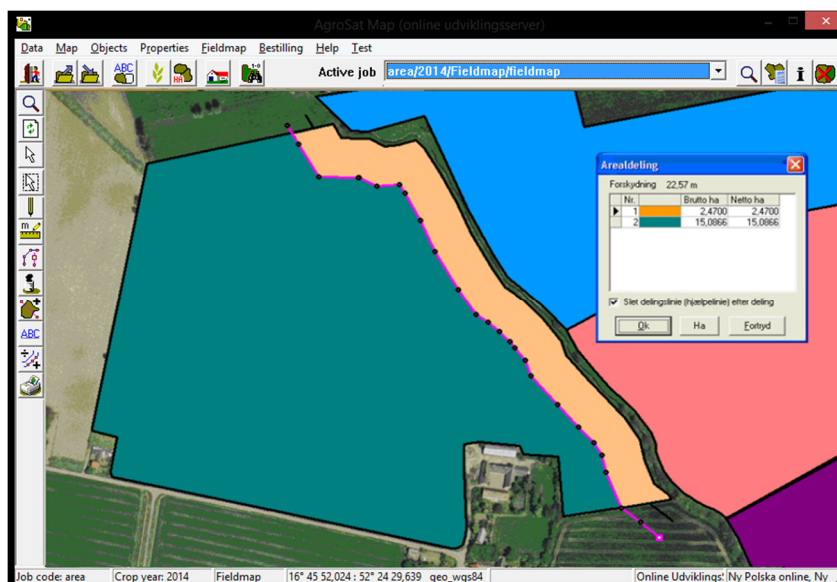
The program will now calculate the number of new sites, and the size of these.
In this example, the southern part of the area 1.1664 ha.
This area should have been 2.47 ha.
Click on the line that shows the area that you want to calculate automatically. (In this example, area no. 1).
Then click Ha.



In the dialog that opens, specify the desired area. In this example, 2.47 ha.
Then click Ok.



The program will now calculate the exact location of the division line when the desired area is 2.47 ha.
The field displacement shows how many meters the line to be displaced in order to achieve the desired area (here: 22.57 m).
If you want to make space division approved calculation with Ok.
You can also make a new calculation by clicking on Ha.



Merging two fields into one

Generally

If you want to merge two field areas this can be done using a function in the program.

However, it is a prerequisite that the two areas have common land border.

prerequisites

The map you want to work with, must be selected as the active job.

Zoom to area

Use the zoom function and zoom in on the areas you want to join.

Select the area.



Then select the function Merge areas.



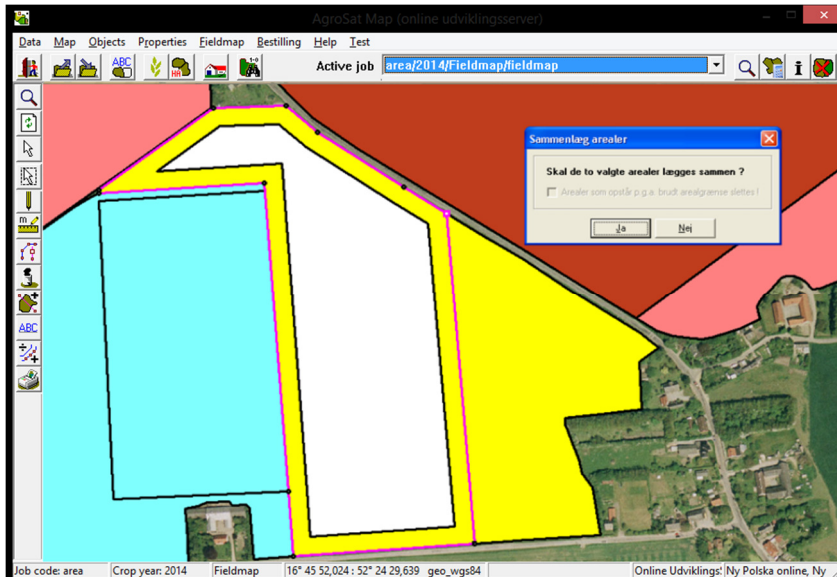
Now the following message.
Click OK then select the two adjacent areas are to be merged.



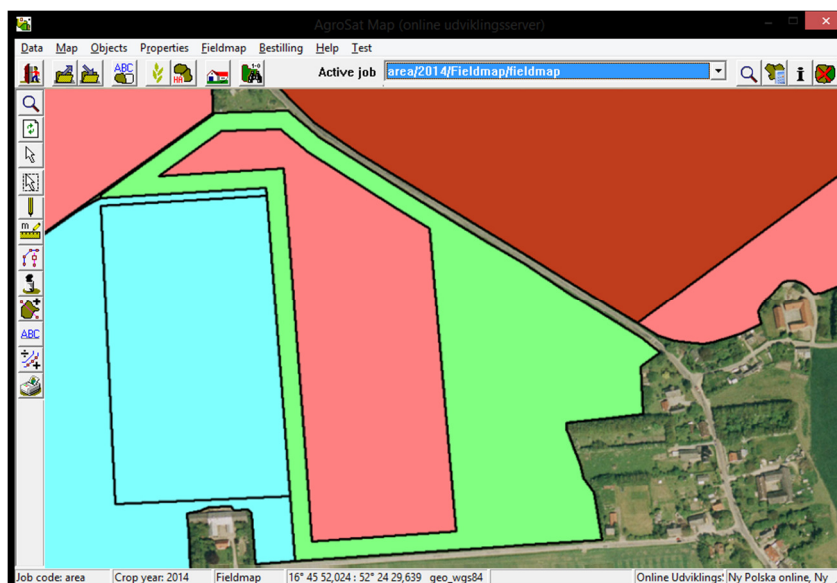
Now click on the 2 areas as desired combined.

Then automatically appears a dialog asking you to confirm the merger.

Want to add areas answer Yes.



The program will now merge the two areas.



important

Although the common line between the two areas is not 100% common, the program may well define areas anyway. In this case, you usually check the box Areas which occur due to broken land border erased in merging dialog. This program will, in good faith, merging the two areas.

In situations where the program cannot merge areas, you can add them by first drawing the new space, and then delete the original two areas. Turn off any display of the points via Highlight feature points. This allows you to draw exactly along the boundaries of the original land.

Use of web service in Agrinavia Map

WMS and WFS are two names for external data downloaded via the Internet into Agrinavia Map.

WMS

WMS stands for Web Map Services and is a standard for exchanging data between a server and a client. The data format is raster and that means it is an image downloaded from a server into a client. The server could be like geoportal.pl and the client may be Agrinavia Map or such. Or an Internet browser. The advantage of the WMS is that the data you choose to query will always appear in the same way no matter whether it is in Agrinavia Map or an Internet browser. The downside is that it is a relatively cumbersome process to generate a raster image, and it requires a good Internet connection from the client to retrieve data.

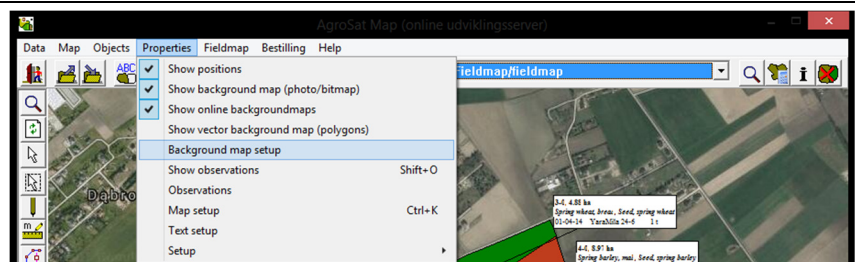
WFS

WFS stands for Web Services Feature and acts in the same manner as WMS described above. But where WMS is raster data, WFS based on vector data. Vector data means it is polygons, lines and points are retrieved from the server, and thus it is far less data to be downloaded to the client

application. The advantage is that it's a much faster service, and that it is possible to copy an object from the captured card and use it in another context.

Create WMS or WFS

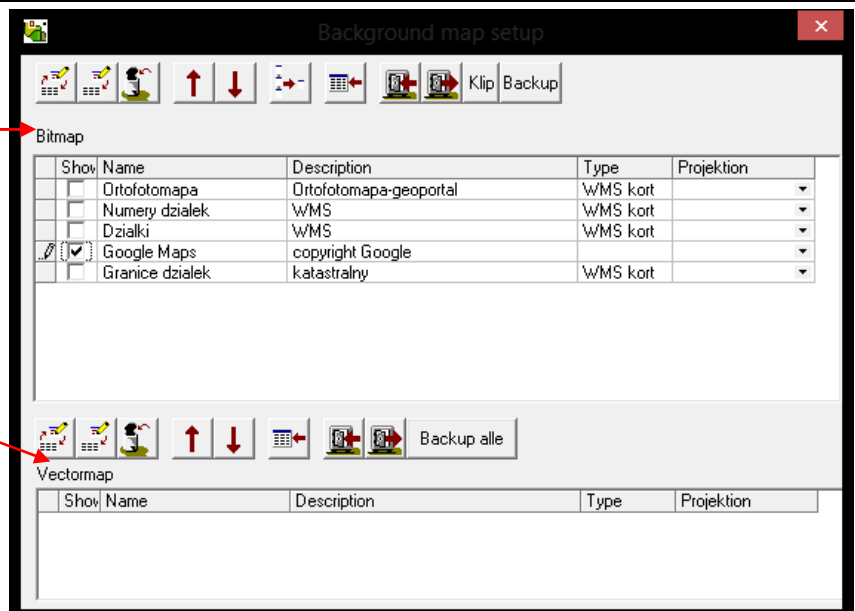
Select the Properties menu and submenu Background Map Setup.



Then, the following dialogue.

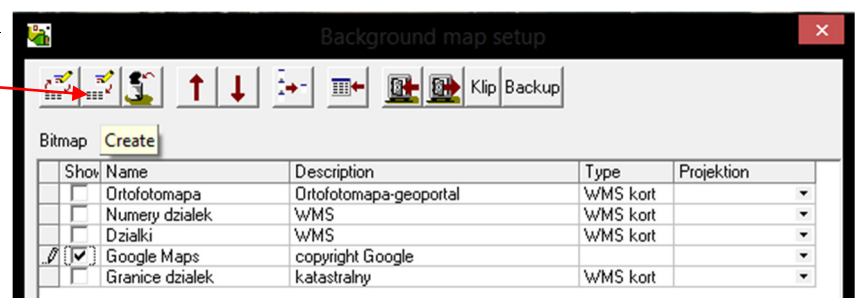
WMS created under section Bitmap.

WFS created under section Vectormap.

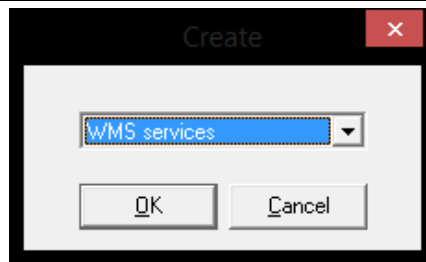


To create WMS map

Select the Create the Bitmap

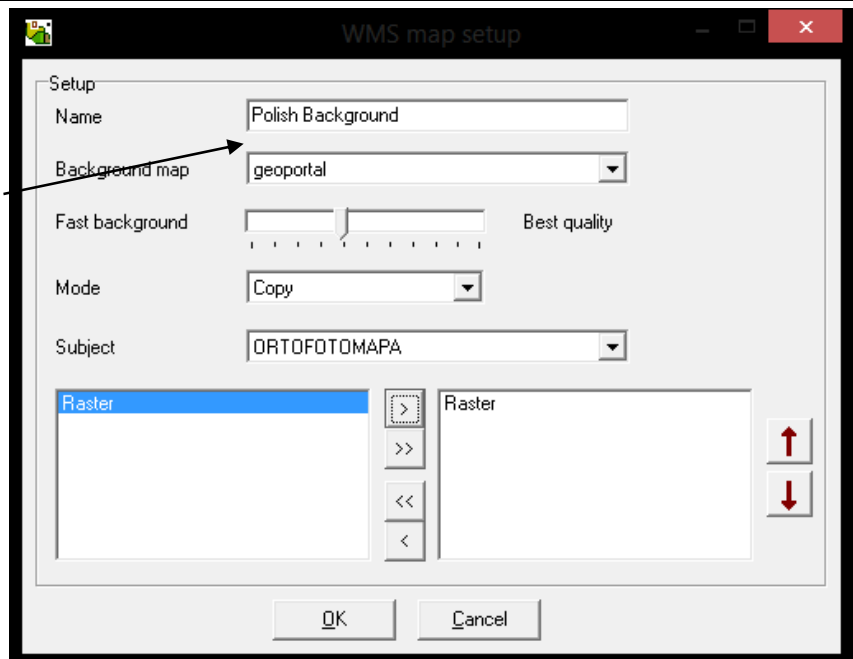


Now, the following dialogue.
Choose WMS services in Drop / down box and then press OK

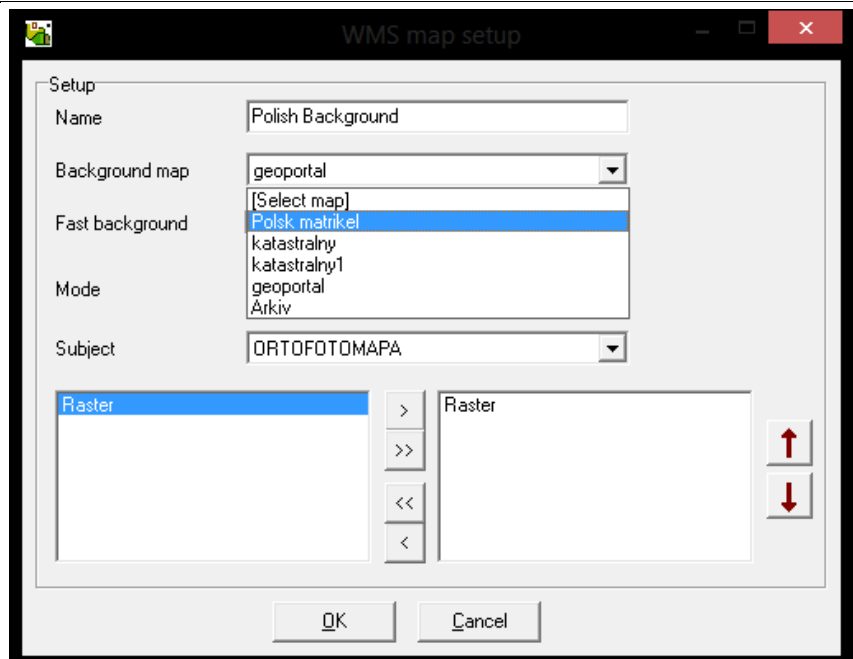


Then, the following dialogue.

In the Name field write the name you want to give the setup.

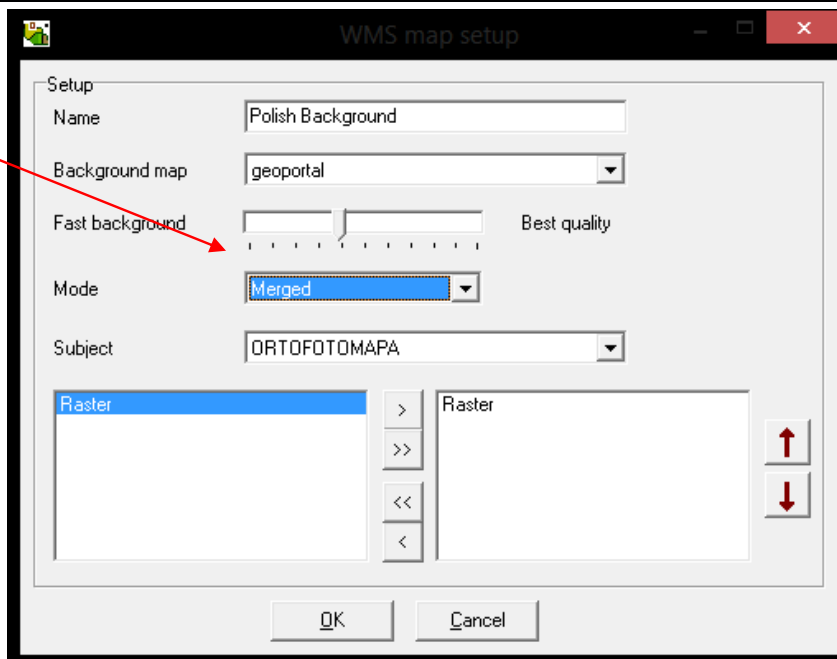


In the drop / down box to Background Map select the server you want to explore for wms data.



You may speedup the speed of WMS Map, this can be done by moving the slider to the left for higher speed and vice versa if you want a better quality must slider is moved to the right

Note that the above function is not supported by all providers of WMS services

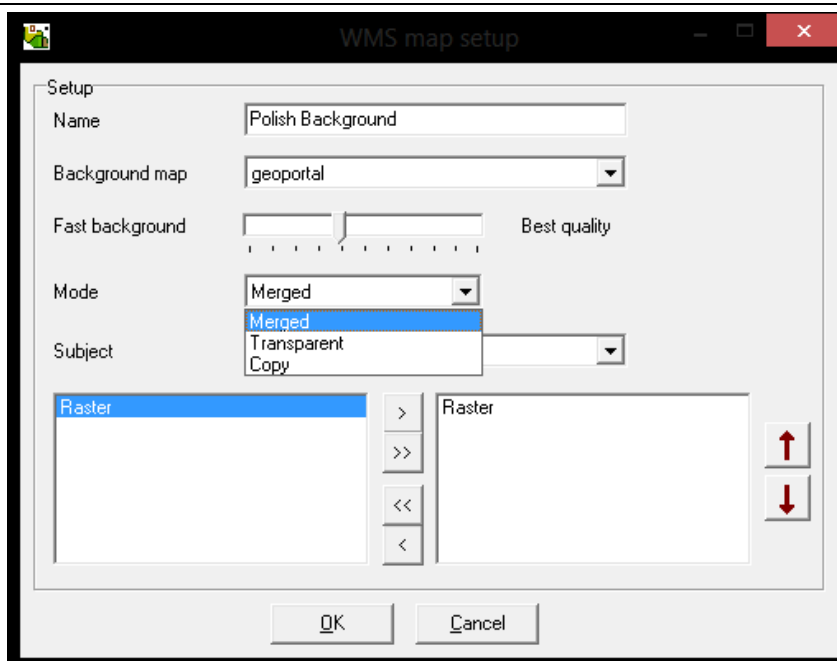


WMS can run in three different modes.

Merge means the card is merged with existing cards for example. a Orthoimagery This means that you can see Orthoimagery even if you have shown a WMS map

Transparent means that everything that is white becomes transparent

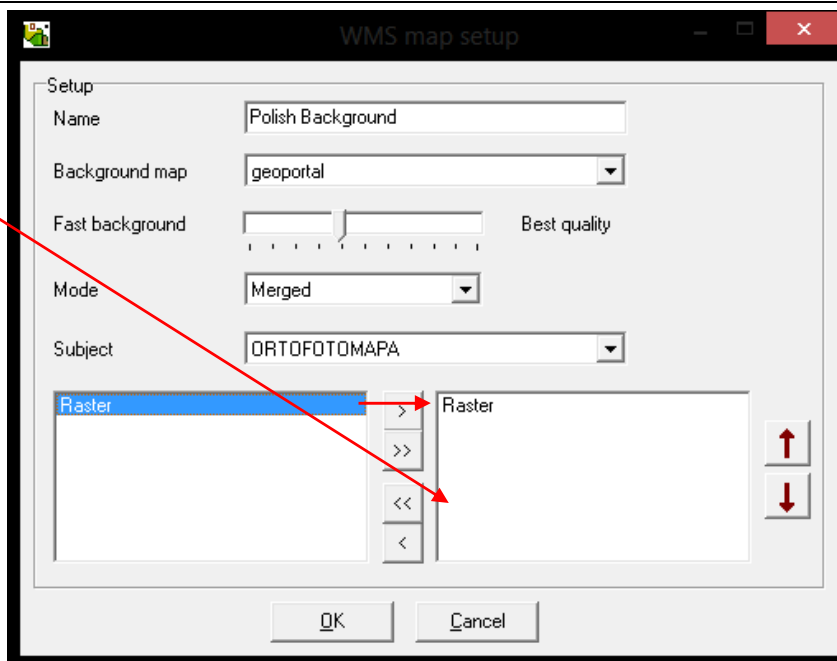
Copy. When you have chosen the Mode Copt, any background map that might. lies behind the wms map will be hidden.



Then select the item you want in the drop / down box and select the desired theme card by moving the text over to the right with the arrow pointing to the right.

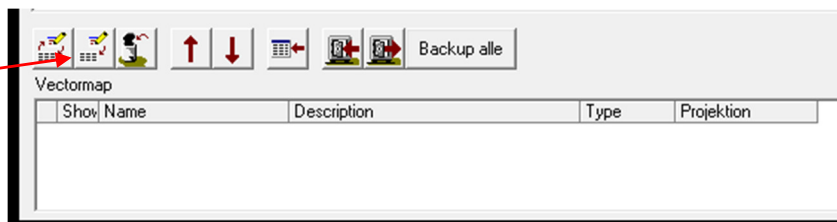
It is possible to choose multiple thematic maps by repeating the above action.

Then close the dialog by pressing OK

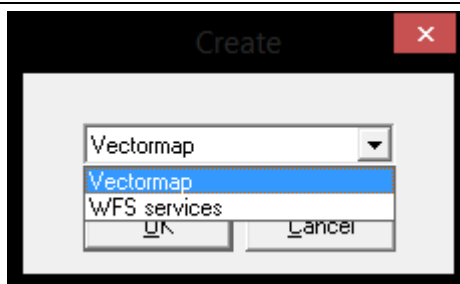


To create WFS map

Press the button labeled Create the Vector Map

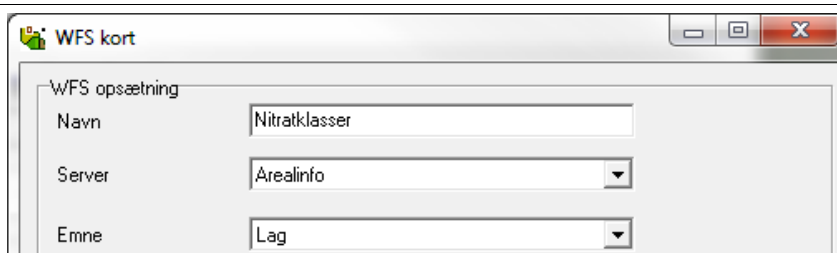


In the dialog that appears, select WFS services in the drop / down list



Then, the following dialogue starts.

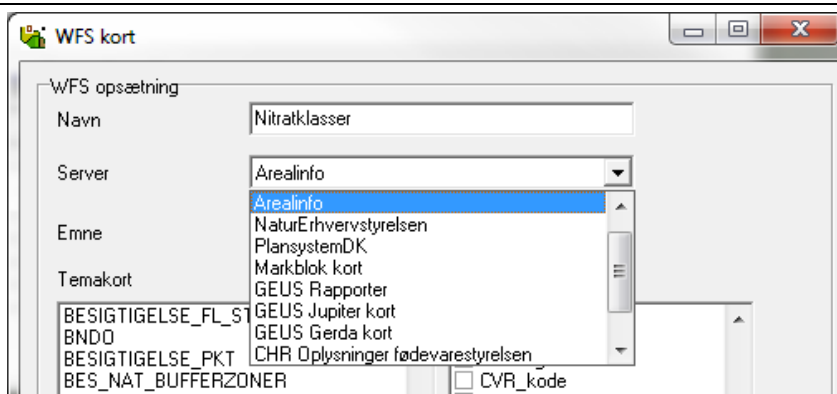
In the Name field write relevant name that will appear the Background Map Setup.



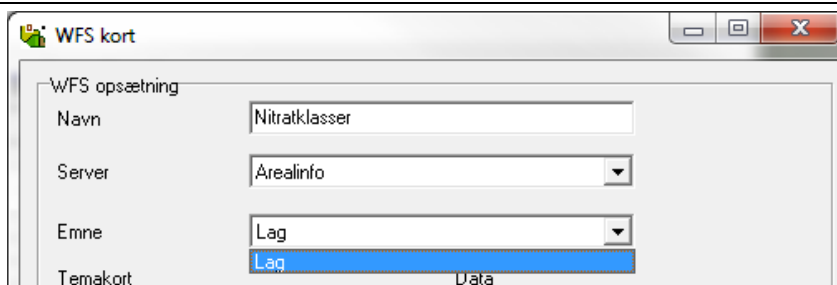
In the drop / down box next to Background Map select the free server you want to get data from.

Unfortunately, this is country specific if there's any free data available, but please send us any relevant links if we miss some.

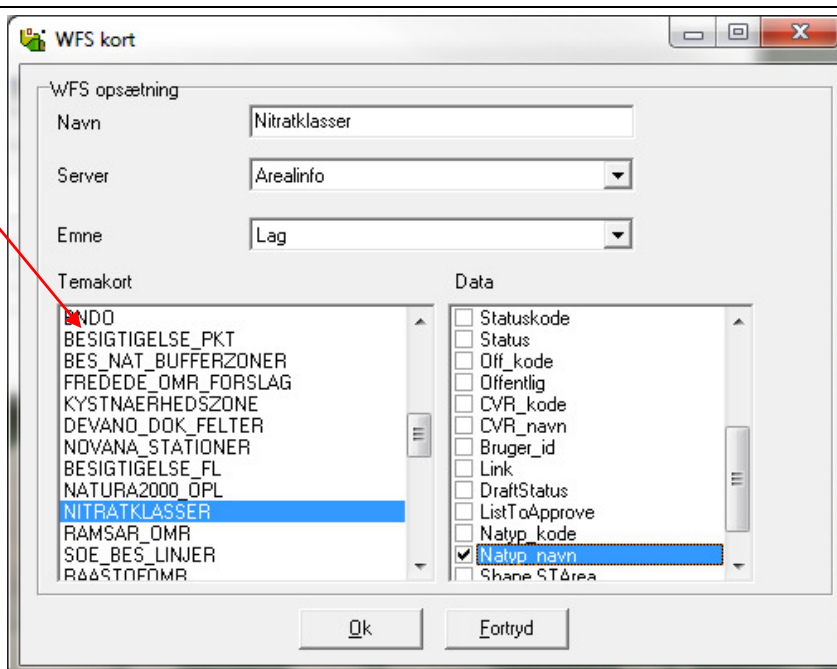
I have used Danish server list for educational reasons.



In the drop / down box Subject select Layer. It is rare to be selected something in the Subject.



At the bottom of the dialog, select the theme Map you want to use. To do so, select a line, for example. nitrate classes



In the lower right corner, select the type of data to be colored by. Tick data type to select it. You can only select a data type access

When it comes to data from environmental portal, most often tick off Natyp_navn. Natyp_navn is the field containing the names of the objects.

Press OK to finish and create the map.

WFS kort

WFS opsætning

Navn: Nitratklasser

Server: Arealinfo

Emne: Lag

Temakort

- BND0
- BESIGTIGELSE_PKT
- BES_NAT_BUFFERZONER
- FREDEDE_DMR_FORSLAG
- KYSTNAERHEDSZONE
- DEVAND_DOK_FELTER
- NOVANA_STATIONER
- BESIGTIGELSE_FL
- NATURA2000_OPL
- NITRATKLASSER**
- RAMSAR_DMR
- SOE_BES_LINJER
- R&ASTOFDMR

Data

- ☐ Statuskode
- ☐ Status
- ☐ Off_kode
- ☐ Offentlig
- ☐ CVR_kode
- ☐ CVR_navn
- ☐ Bruger_id
- ☐ Link
- ☐ DraftStatus
- ☐ ListToApprove
- ☒ Natyp_kode
- ☒ Natyp_navn
- ☐ Share STArea

Ok Fortryd

Now there is created a Map under Vector Maps called Nitrate classes. It is possible to create several types of thematic maps and display them simultaneously.

To select the map to be displayed at the top of the screen, it is controlled with the arrow icons. It's the card that falls at the bottom it is shown at the top of the screen.

Vektorkort

Vis	Navn	Beskrivelse	Type	Projektion
<input type="checkbox"/>	NaturErh Randzone	NaturErhvervstyrelsens Randzonekort	WFS kort	
<input type="checkbox"/>	NaturErh Markblok	NaturErhvervstyrelsens Blokkort	WFS kort	
<input checked="" type="checkbox"/>	Nitratklasser	Nitratklasser	WFS kort	
<input type="checkbox"/>	Fosfor	Fosfor	WFS kort	
<input type="checkbox"/>	Naturtyper	Naturtyper	WFS kort	
<input type="checkbox"/>	Beskyttet vandløb	Beskyttet vandløb	WFS kort	

Print Map

Generally

Print module has many options. Therefore, you should see the Users Guide section to see all the options.

Select Print function.

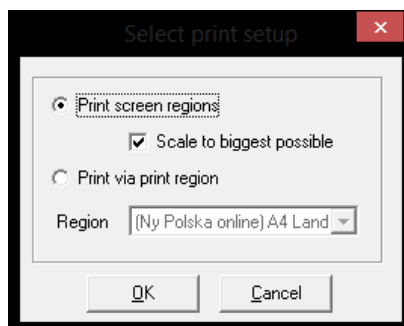


Then choose the Print function cards.



Select Print screen area if you want to print the map displayed on the screen.

Select Print from the print area if you want to print an area you've drawn.



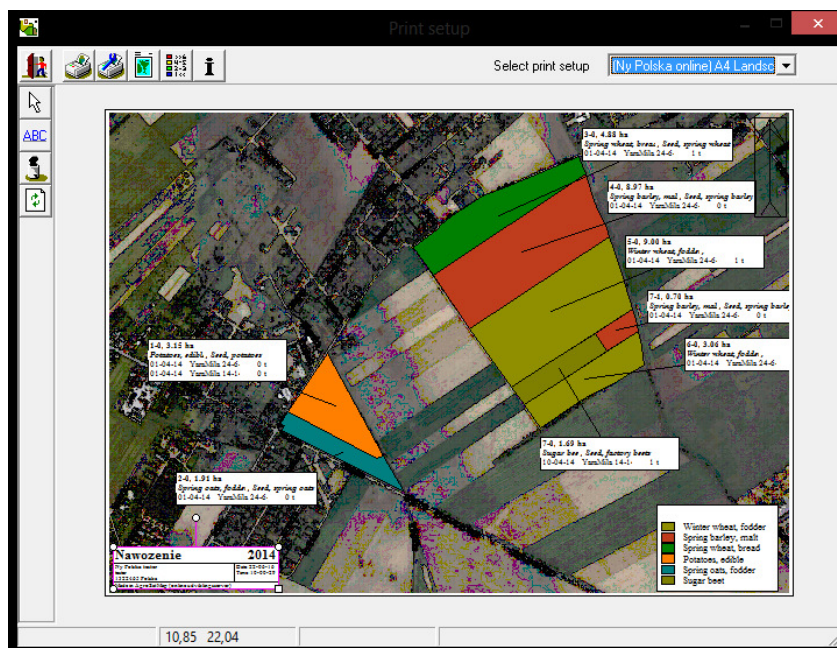
Area

Using the list area you can choose among the print areas (and arrays) that you might want hidden.

Now the print settings dialogue. The white area shows the current paper size and orientation. The program will then place the map section of the page.

If you want to print the map as it appears, simply choose the Print function.

If you want to change the aspect ratio, position, add headers, layer / scale, texts, logos, North arrow, etc., It is possible through the features found in the dialogue.



Managing data (local installations only).

Generally

The following explains how to manage data when the customer database is created.

Online Customers don't need to worry about backing up data as we create backups on a daily base.

Back up data to the server (Local installations only).

Generally

When you are finished working with a client, save the data on the server's hard drive. (Same principle as with Næsgaard Mark).

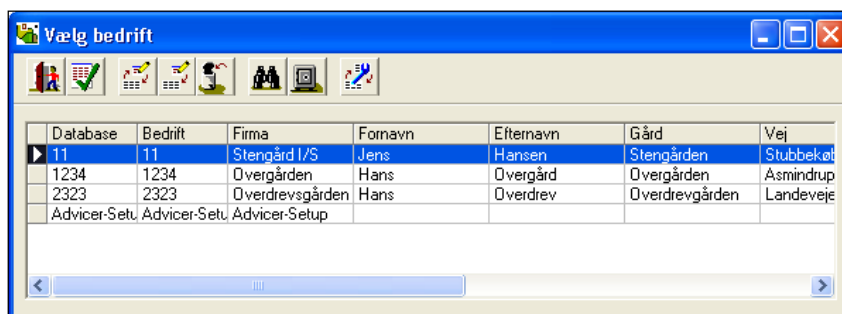
Library on the server

It is important that in your program are given the correct folder on the server via the Setup icon of the backup. Talk to the computer responsible about this.

Select the function. Choose farm.



Now open holding book. If you have more than one holding (database), select the farm that you want to back up by clicking on the line, so that it is highlighted.



Choose Backup.

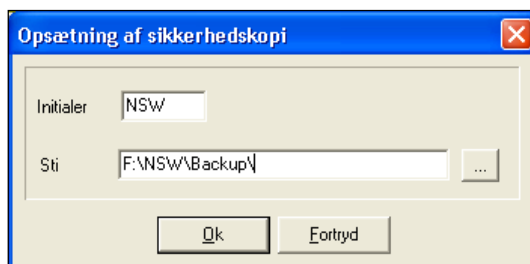


Select the Setup backup.



In the Settings dialog backup you can enter your initials. Your initials used in connection with the locking of the holding and to show who have downloaded the backup and working on it.

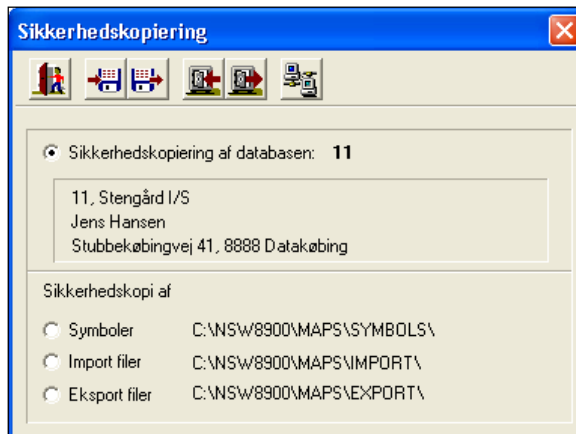
In the Path field, specify the path to the drive where you want to store data. Here, the path may be set to your own



hard drive or on a server.
Press Ok.

You are now back in the
dialogue Backup.

In the dialogue, the selected
database / customer from the
dialog window holding. Check
that this is correct.



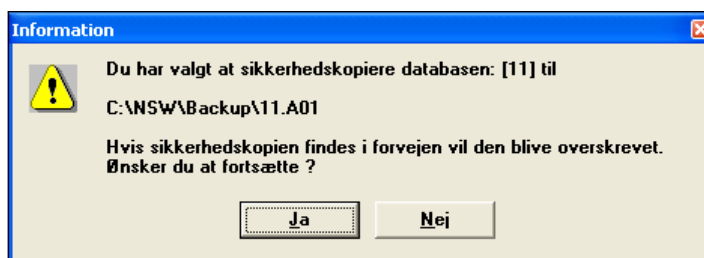
Select the Export backup to
the hard disk.



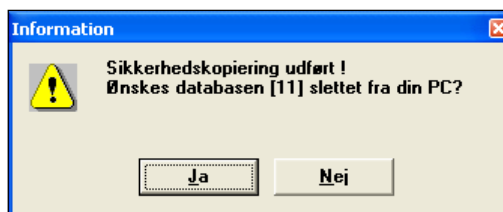
Now the following message.
Answer Yes to this. (If you
can accept it).

Data are now copied to the
selected path on the server /
hard drive.

Is there a database with the
same name will be
overwritten.



Then, the question. Normally
you should answer Yes to the
question, so that data NOT
remain on your PC. This
ensures that you are forced to
fetch data from the server the
next time you need to work
with customer data. And thus
you will get the changes that
other people may have
introduced in the data set.



Completion of the program.

When the application closes obtained this message. If you press the Create Backup dialog opens, select the farm from which the backup is made as described above.



Back up data from the server to the local hard drive (local database only) .

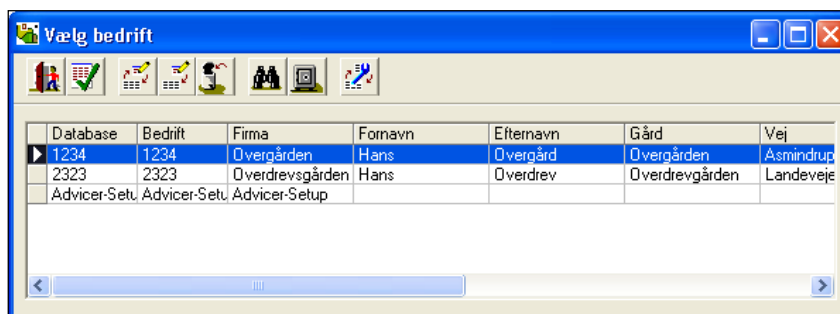
Generally

When you need to work with a client that already has set up data retrieved from the server's hard drive. (Same principle as with Næsgaard Mark).

Choose Select Farm.



Place cursor on Selected Farm



Choose Backup.



Now open this dialogue.

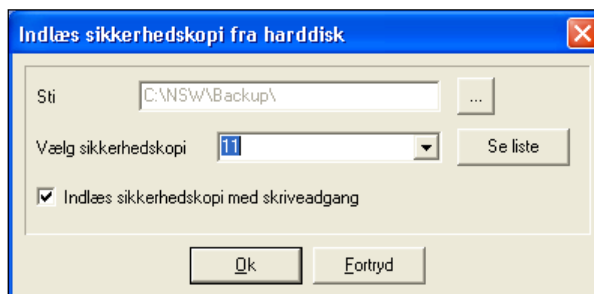


Select the Load backup from the hard drive.



In the drop down list, select the backup you need to select the file that contains the backup.

Via button View list you can open a dialog that shows you a list of all backup files in the selected folder.



Load backup with write access

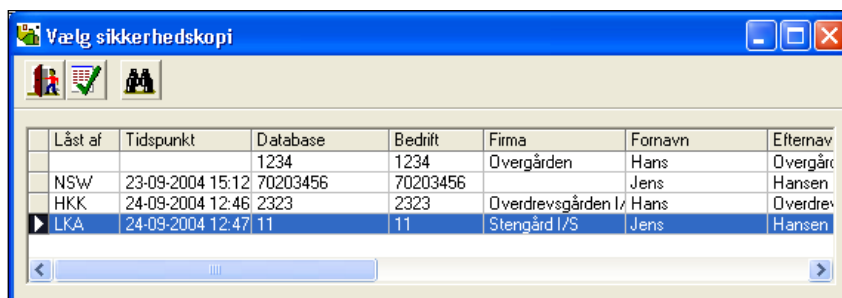
Normally this field must be ticked. This means that other users can see that you work with that set of data. If the box is not checked, it is because another user has loaded the data for writing. In this situation you will not be able to save a backup with the changes you make. (Talk to the other user on this).

In the dialog, select the backup (see list) shows all backups on the selected drive.

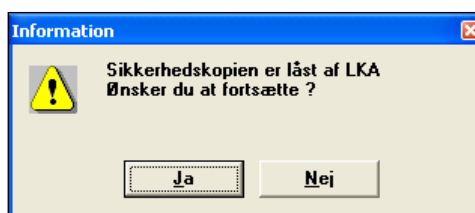
There can be sorted in order of the backups by clicking on a column name.

It is also possible for a search with binoculars icon.

Column Locked by showing whether the backup is already loaded (with write access) by another user, for example. LKA.



If the backup is locked by another user can still be loaded, but will not be output to the same drive after use.



When you select OK the following dialog will appear. In the backup contains, the program will display information about the backup.

In the backup is loaded, the program will suggest that the backup is loaded into a database with the same name.

It is possible to load the backup of a database with a different name, simply by typing the name in the database, or by selecting an existing database. However, note that when selecting an existing database, the data in the selected database will be overwritten by loading the backup.

If the farm is available on the PC, the program will note that all your existing data in the database will be overwritten. Select Yes if you want to continue.

Note: Changes made to the farm on the PC will be overwritten with the farm from the backup.

Then unpack the backup to the hard disk. This may take a while.

Export jobs to a partial backup (Local installation only)

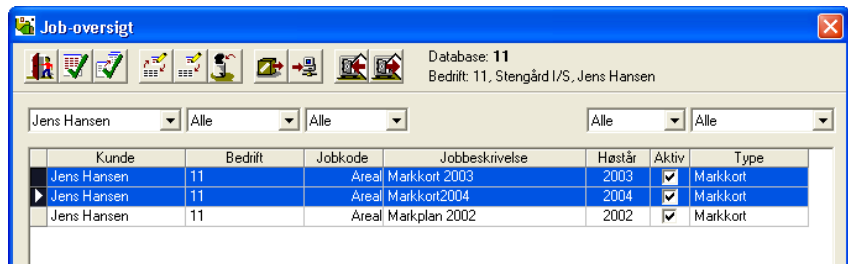
Generally

Export jobs to a partial backup allows to export (save) selected job in a special backup.

Choose Select Farm.



In the dialogue Everyone will be marked now the jobs are to be saved in a partial backup.



Select the Export jobs to a partial backup.

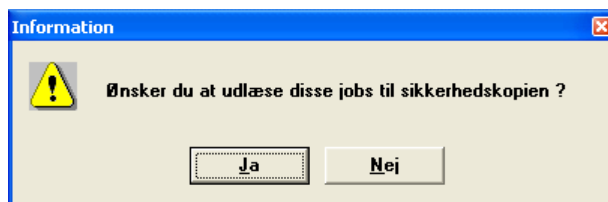


The selected job will now be loaded into the folder Partial backup.

Here it is also possible to delete the job not be included in the partial backup.



This dialog appears at the same time and the answer is Yes.

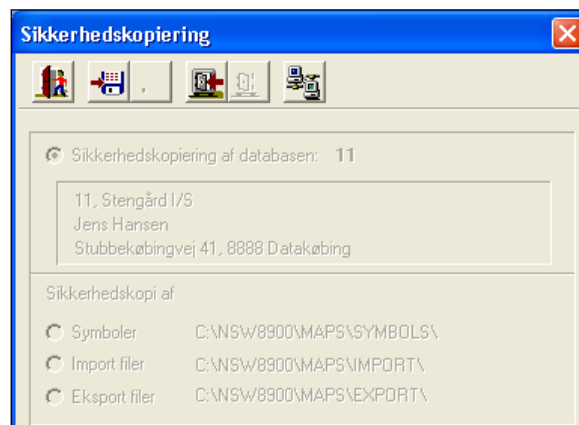


The selected jobs can now be displayed as a partial backup via the icon Export backup to the hard disk.

The backup gets the name xxxx.D01.

There are the same opportunity to set the initials and path as at normal temperature. backup.

Please note that changing initials and path in Partial backup will also be changed in Alm. backup.



Get jobs from a partial backup (Local installation Only)

Generally

Get jobs from a partial backup allows you to import (load) selected job from a backup. There can be loaded job from both partial and regular backups.

Choose Select holding.

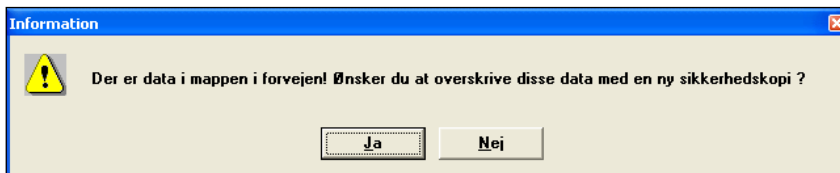


In the dialogue Job overview select the Retrieve job from a partial backup.

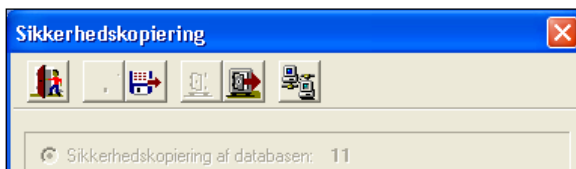


This message appears if there is data (jobs) in the folder Partial backup.

Here, answer Yes to delete the data (job) that exist in the folder in advance and load the new data (job) from the partial backup.

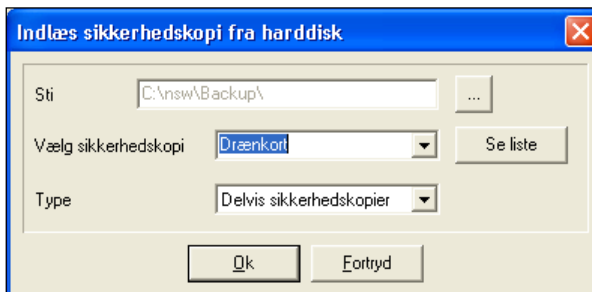


In the dialogue Backup selected function Load backup from the hard drive.



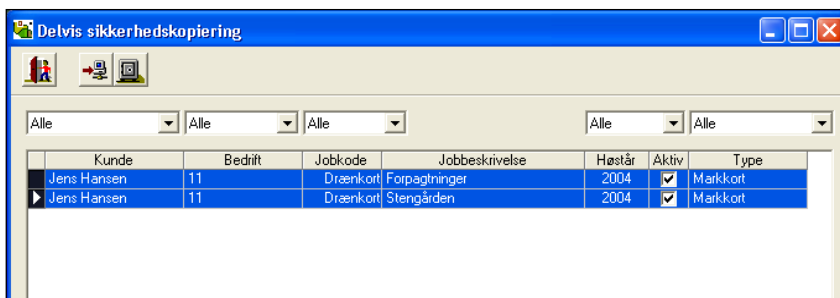
In the dialogue set type for Partial backups and the backups will appear in the list above.

Note: You can also choose to load a plain. backup by changing the type field to General backups.



Job from the partial backup is now scanned in the dialog Partial backup and to import to the database are working in.

Select the job to be imported.
Select the Load button.



Give a message to the selected jobs are transferred to the database. Select OK and exit the dialog with the button Exit.



The loaded jobs are now found in Job list.

