

Preselection

General description

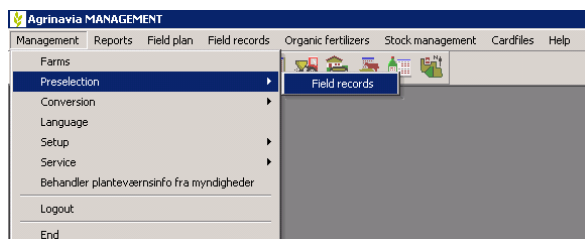
This section describes how to create and apply preselection. Preselection is preselected setting for different types of treatments for which, you choose standard machine rate or other product records which will be applied to the field sheet.

This means that when you create a new registration on the field sheet you automatically have a person inserted and one or more records with machinery or other.

Preselection setup is saved per farm/Partnership

Create Preselection

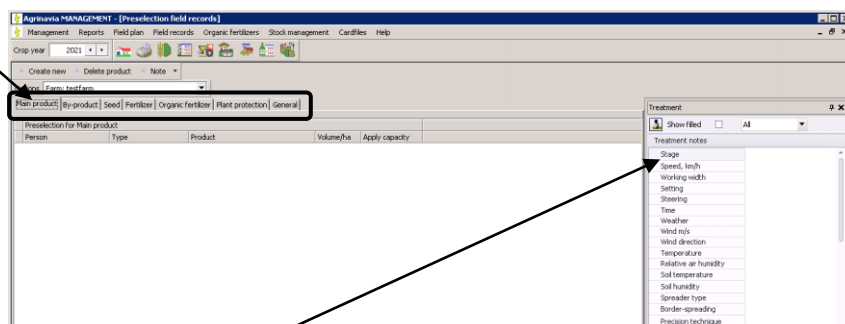
Choose the **Admin Menu, Preselection, field records**



The pre-selection is built with 6 tabs of different types, as well as a general settings tab. This means that different preselections can be created for

- Main product
- By-product
- Seed
- Fertilizer
- Organic Fertilizer
- Plantprotection

In addition, there is a section for processing notes to each preselection.

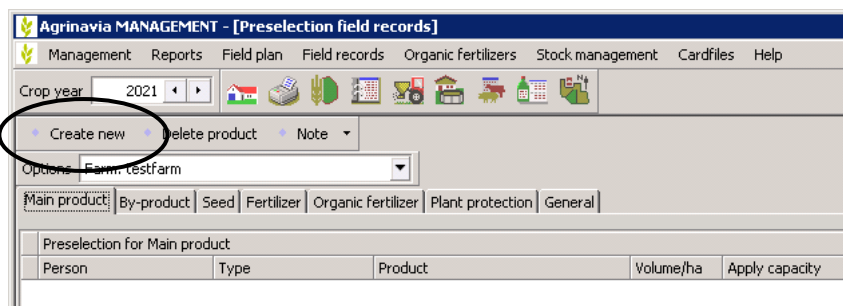


Features of the preselection dialog.

To create preselections, you must be on the tab with the type to which you want to associate the preselection.

Then press the **Create new** button.

If you want to assign a specific person to the current type of registration, the person in the person column is selected.



The standard consumption required can be indicated on the average level.

For each record, there are the following columns:

Type: This is where the type of index is selected.

Medium: Select a remedy of the specified type.

The field can also be blank.

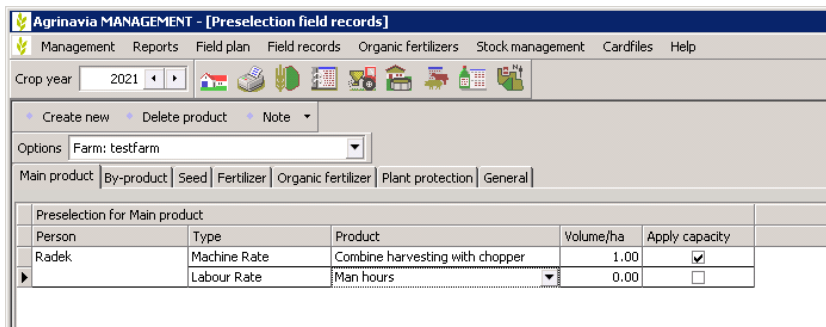
Quantity/ha: Enter the desired quantity.

Use Capacity: This field can only be used on a **machine** or **machine rate** record. If a machine or machine record is ticked and a work rate record is subsequently created, then the *quantity on the work rate* is calculated based on the capacity of the machine / machine rate that has a check mark in the Use **Capacity** field

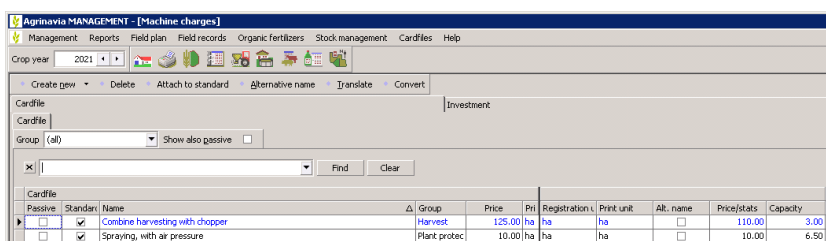
The price of the funds is always collected from the file when the processing is created.

Notes

General tab



Person	Type	Product	Volume/ha	Apply capacity
Radek	Machine Rate	Combine harvesting with chopper	1.00	<input checked="" type="checkbox"/>
	Labour Rate	Man hours	0.00	<input type="checkbox"/>



Passive	Standard	Name	Group	Price	Pri	Registrations	Print unit	Alt. name	Price/stats	Capacity	G
<input checked="" type="checkbox"/>	<input checked="" type="checkbox"/>	Combine harvesting with chopper	Harvest	125.00	ha	ha	ha	<input type="checkbox"/>	110.00	3.00	G
<input type="checkbox"/>	<input checked="" type="checkbox"/>	Spraying, with air pressure	Plant.protect	10.00	ha	ha	ha	<input type="checkbox"/>	10.00	6.50	G

For each type of preselection, it is possible to create a note. It is possible to create a processing note, and a processing comment.

On this tab, it is possible to select whether the preselections should be used for copying from standard plans and crop default plans.

Include preselection lines when copying standard plans: If there is a check mark here, the information in the pre-selection is added when copying treatments from standard plans to field sheets.

Include treatment lines by copying crop standard plans. If there is a check mark here, the information in the pre-selection is added to the treatments that are automatically created when crop is put in a field. These treatments are typically of the types: **Seed** and **Main Product**.

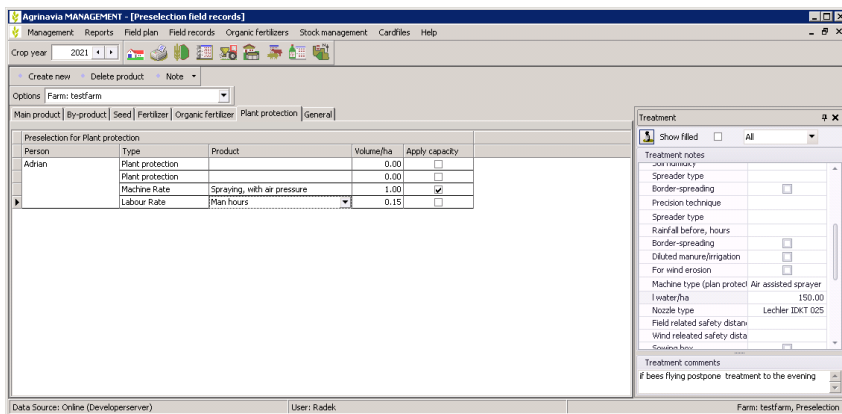
example

Here is a pre-selection setup on plant protection.

In the example, 2 records of the type: Plant Protection are added on which no product or quantity is indicated.

In addition, there is a record with machine rate spraying and a record with work rate.

A note with water volume, nozzle and a commentary has also been inserted.



When you subsequently create a new treatment in the field sheet and choose the type plant protection, then the records, notes and person created in the pre-selection will be added to the newly created treatment.

